

INTER-ACTION
Hobbies

Rail and Tie Craftsman Kits

1:48 O Scale

Stu's Tobacco Shop



- High quality O scale building:
4.2" wide by 7.3" long by 5.0" high
- Assembly & painting required
- Paint, glue, and hobby tools required for assembly
are not included

WARNING: CHOKING HAZARD - Small and sharp parts
Not for young children

Kit: O-3101

© 2023

Inter-Action Hobbies

www.interactionhobbies.com

Stu's Tobacco Shop in O Scale (1:48)

Stu's Tobacco Shop is a homage to the traditional tobacco shops seen in towns and cities all over North America from the late 1800's through the 1930's. This typical shop is modeled after a prototype found at the Three Valley Gap ghost town in central BC, Canada.

Stu's is a high class establishment with quality clientele. Installing the optional interior detail kit provides rich wood cabinetry and wainscoting to round out a warm and inviting interior to let his customers come and sit a spell, in front of a warm fire while basking in the rich aromas of the tobacco products within!

Main Kit Components:

- 7 sheets of laser cut/ engraved stabilized resin impregnated board (RIB) for crisp, high resolution detail
- 9 sheets / pieces of laser cut and engraved basswood
- 1 sheet laser cut mat board
- 1 sheet laser cut clear window glazing
- Basswood strip stock bag & 1 piece phosphor bronze wire
- Styrene castings (lamp reflectors, chimney)
- 1 sprue of 3D printed door knobs
- 1 laser cut interior wall paper sheet (tan/buff color)
- 1 laser cut chipboard template
- 1 graphics sheet
- 1 sheet of laser cut paper shingles
- Kit assembly instructions, parts ID sheet and template sheet

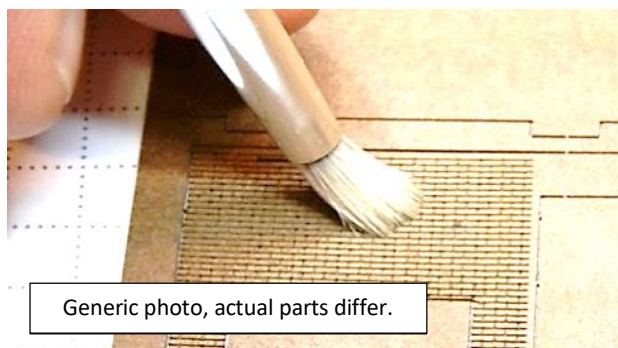
Suggested Tools and Supplies:

- X-Acto type knife with fresh blades (#11 style is best). Change your blades often for better results.
- Tweezers
- Fine sandpaper (300+ Grit) and / or emery boards
- Masking tape or clear adhesive tape
- Canopy Glue, Probond, Elmers white glue or Scotch Quick-Dry Adhesive (I like the Scotch adhesive as it dries with little residue)
- Scotch Clear Glue with 2-Way Applicator
- CA glue for bonding of small hard to place parts. For immediate bonding of small parts, use a 1:1 blend of Slo-Zap CA and canopy glue (But you have to work fast!).
- Acrylic model paint or craft paints. I recommend investing in the higher quality Vallejo and MIG by Ammo products as they have superior coverage and stronger pigments.

We hope you enjoy making this kit as much as we did providing it to you. If you have any questions, please contact us at sales@inter-action.ca.

NOTE: If you would like to view these instructions digitally, please feel free to download a full colour copy at www.interactionhobbies.com and click on the link for "Instructions" near the top of the page.

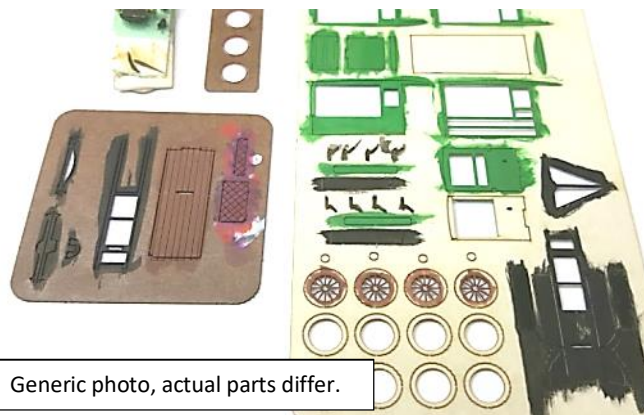
The following instructions and photos will provide the basics for assembling this detailed kit. We have tried to make the steps as straight forward as possible, but please note that you might want to change the order of assembly to suit your own technique and modifications that you might make along the way. As usual it is best to familiarize yourself with all the parts and instructions before you start on this craftsman level kit.



Generic photo, actual parts differ.

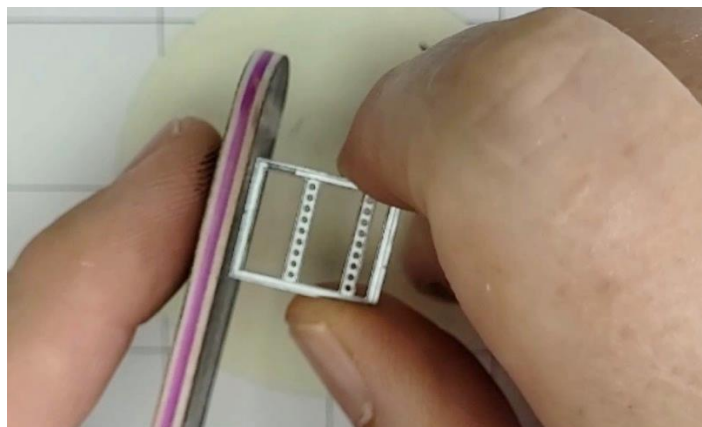
Start by cleaning out any contaminants and remaining dust that may be in the cracks of the engraved details in sign, walls etc.

This is done by using a stiff bristle brush and gently dusting the nooks and crannies. Avoid touching very fine details like window mullions etc.



Generic photo, actual parts differ.

I like to paint some of the parts while still in the carrier. Some parts may need to be painted on the backside as well. Some touch up will be required after assembly, but this is a good start.



When removing pieces from carrier sheets, run your fingers down the cut off tabs and if you can feel them, sand them off lightly for a better fit. An emery board / disposable nail file is ideal for this purpose.

Always use your X-ACTO knife in such a way that when you cut a piece off of the sprue, the knife blade runs off away from the piece and not digging into the part.

After removal from the carrier, some touch up of edges that will be visible should be done before assembly; and, some touch up may be required after assembly



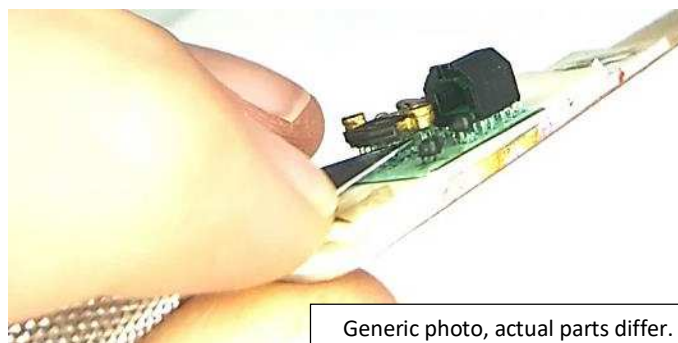
Generic Photo, actual parts differ.

A handy glue applicator to use when laminating larger panels like the interior wall/stringer panels, is "Scotch Clear Glue, with 2-Way Applicator". This glue bottle has a "pad" that you can dab glue onto larger areas for better coverage. I work over a clean paper towel for dabbing the backside of each part.



Generic photo, actual parts differ.

Painting 3D parts are easier while still on the supports. Stick the parts and carrier on some double sided tape and to a popsicle stick or scrap piece of wood.

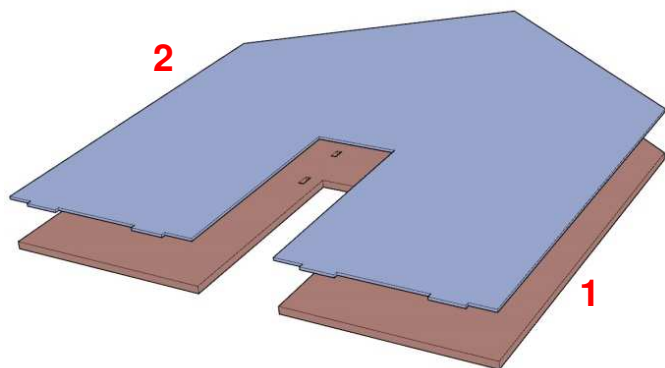


Generic photo, actual parts differ.

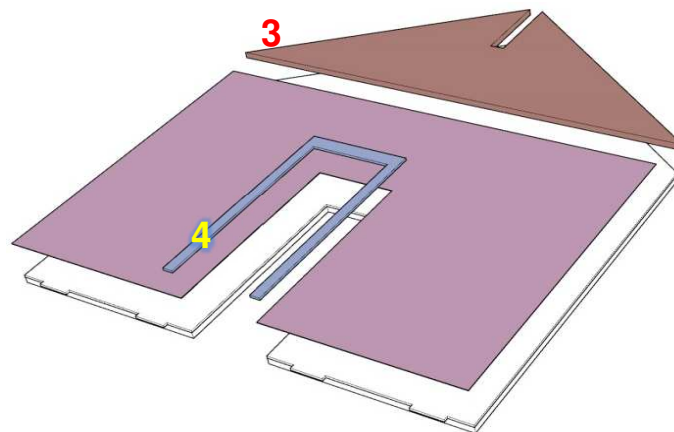
3D printed parts removal with an x-acto blade or fine sprue cutter. **GO SLOW, ONE PIN AT A TIME!**

Paint / Colors used in prototype model:

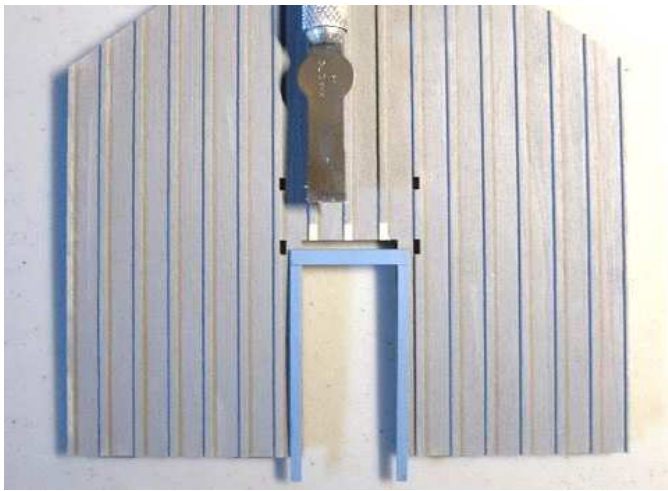
Front Wall	Vallejo Game Effects Rotten White 72.130 Sponged and drybrushed over stained wood.	Foundation/Floor	Vallejo Model Color Flat Earth 70.983 Streaked with Cork Brown 70.843
Side & Back Walls	Vallejo Game Color Stonewall Grey 72.049 (Drybrushed White for highlighting battens.)	Interior Walls	Vallejo Model Color Yellow Ochre 70.913
Exterior Trim & Doors	Model Master Signal Green Flat Alternate color scheme: Vallejo Model Color Pastel Blue 70.901	Interior Wainscoting, doors & Chair Rail	Vallejo Model Color Orange Brown 70.981
Window Mullions	Vallejo Model Color Off-White 70.820		



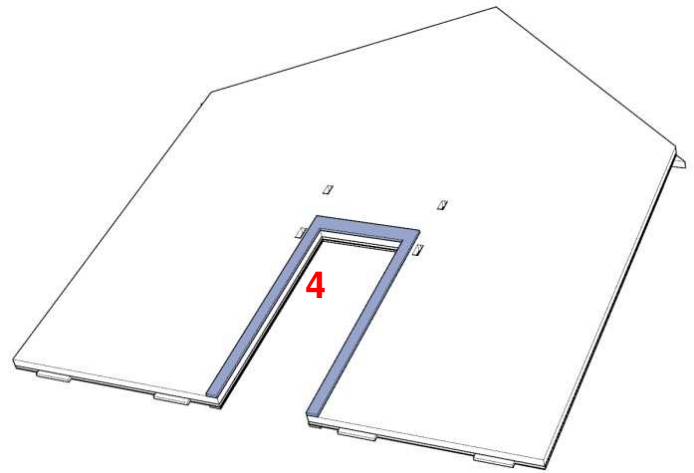
Glue the inner wall panel to the outer wall panel so that the sides, top and doorway are flush. The tabs on 2 should hang out the bottom.



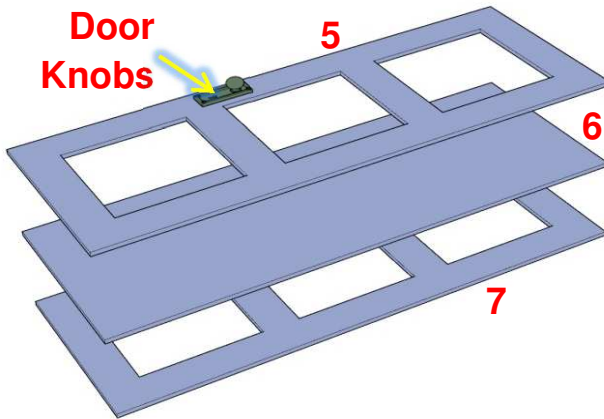
Glue the matching laser cut tan wall paper sheet glue to the face of 2. Glue doubler 3 to face of 2, flush with the top of the panels. Part 3 looks similar to part 47 – be careful not to confuse them. Glue door frame 4 in place around the door opening, over top of the tan wall paper sheet.



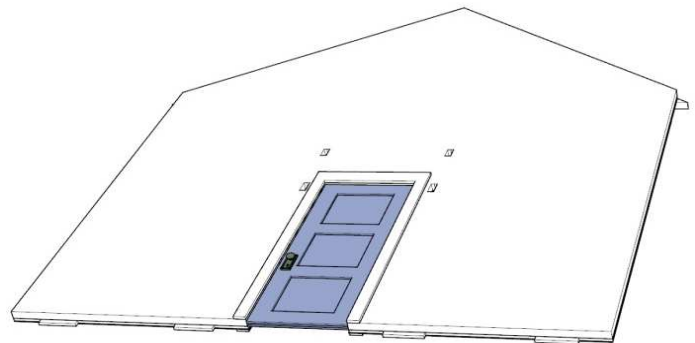
When mounting part 4 on the back exterior of the building, it is worthwhile removing the battens beneath the head of the doorframe (a #17 blade works well).



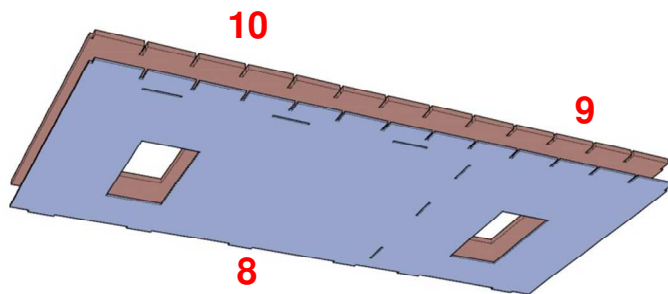
Glue door frame 4 to the exterior wall panel.



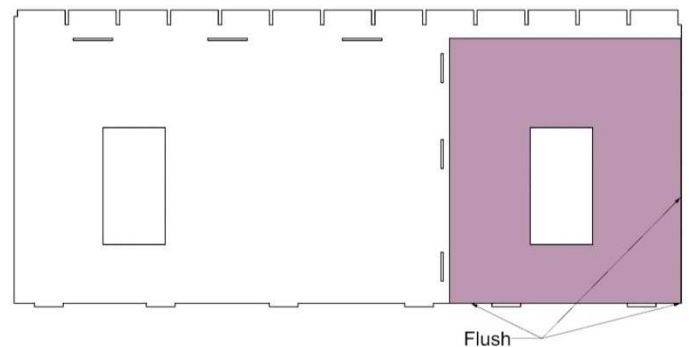
Glue door panels 5, 6 and 7 together to form the back door. Note: you can glue the door handles onto both sides of the doors at this point, or wait until the model is assembled, as they are quite delicate.



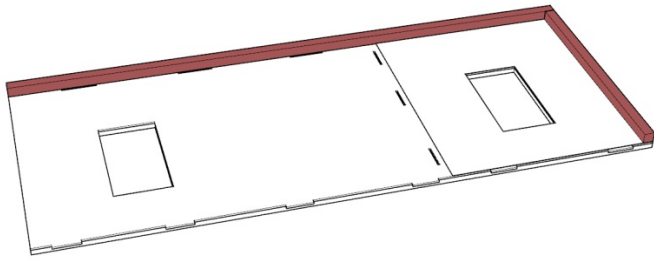
Glue door in place on back wall. **Make sure the fine detail on part 6 is on the outside of the door and painted with vertical brush strokes to enhance the planking etched into this part. If it's on the inside, this nice detail will not be seen.**



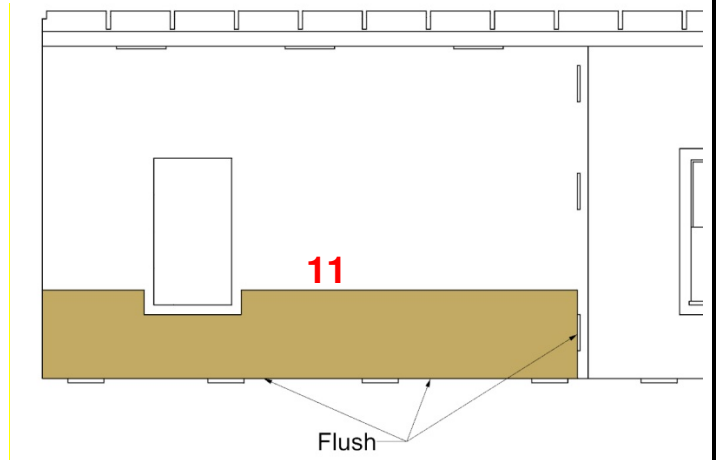
Glue the outer wall panels 9, 10 to the inner wall panel 8. **Avoid getting glue into the slots for the rafters or the wall/ceiling slots.**



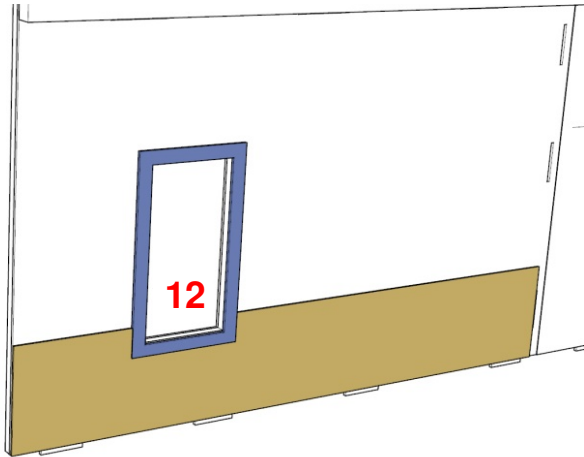
Glue the laser cut wall paper to the inside face of the wall assembly (do this prior to gluing the interior window frames in place).



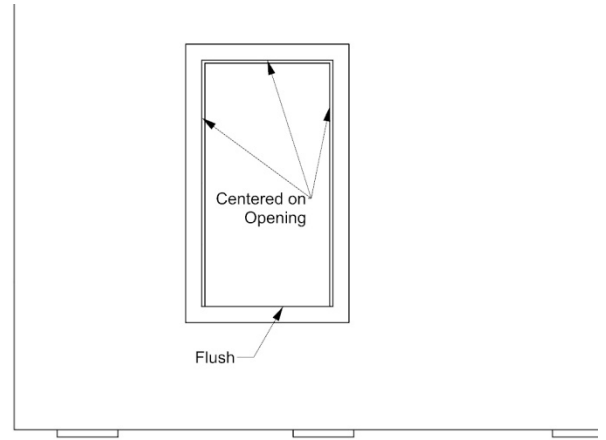
Glue some 1/8" bracing to the wall so that it is flush to the ceiling slots in the wall panel. Additional bracing can be added to the back edge of the wall panel if required. Do not add bracing to the front edge of the wall panel as it will interfere with the front window installation.



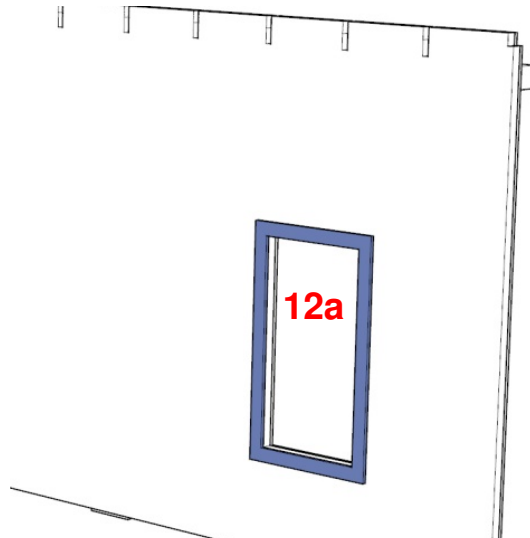
Glue wainscoting to the inside face of the wall panel.



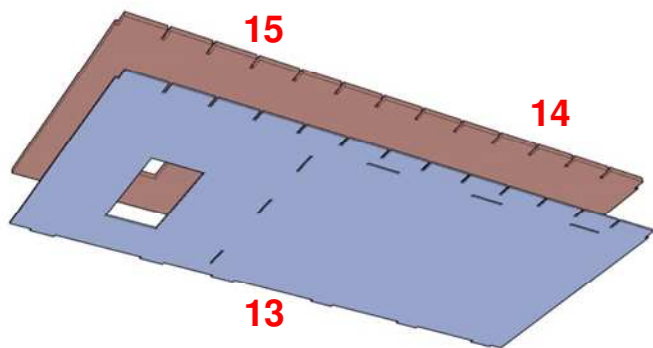
Pre-paint the interior window frames the interior trim color. Glue interior window frame in place as shown to the right. Make sure to have the wall paper glued to the wall prior to installing the interior window frames.



A trick to give a more finished look to where the window frames meet the clapboard or battens; trim away the raised bits of clapboard or batten material to allow the window frame to sit flush with the lowest part of the wall panel.

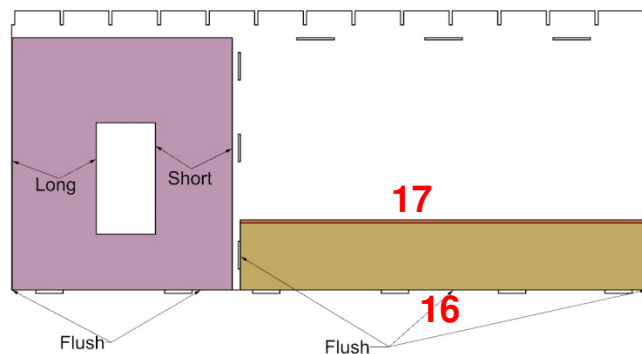


Paint and then glue the exterior window frame in place, centered and flush with the opening in the wall panel.

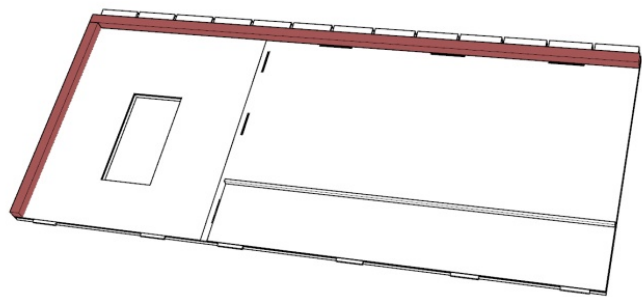


Glue the outer wall panels to the inner wall panel.

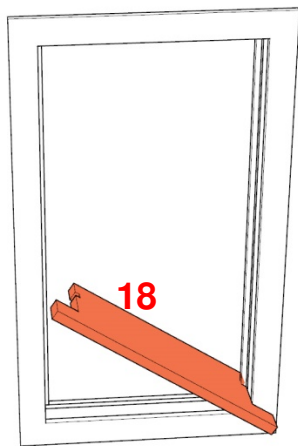
Avoid getting glue into the slots for the rafters or the wall/ceiling slots.



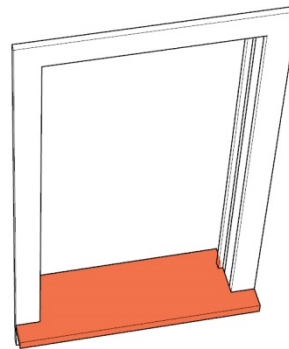
Cut out and glue the paper graphic to the inside face of the wall assembly. Glue wainscoting to the inside face of the wall panel.



Glue some 1/8" bracing to the wall so that it is flush to the ceiling slots in the wall panel. Additional bracing can be added to the back edge of the wall panel if required. Do not add bracing to the front edge of the wall panel as it will interfere with the front window installation.



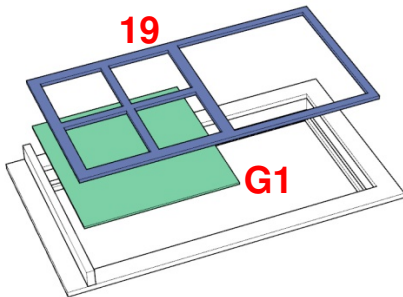
Pre-paint the exterior portion of the window sills with your exterior trim color. Then paint the internal portion with your internal trim color.



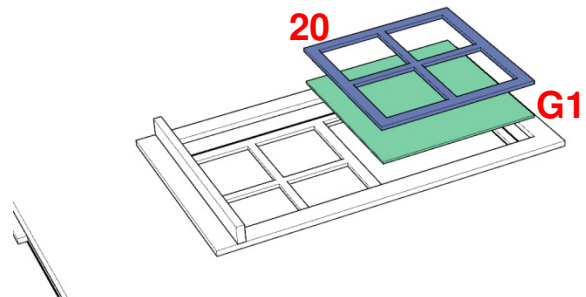
Glue the window sills in place from the outside in.



Don't forget to apply exterior frame paint color to the top and inside vertical edges of the wall opening that are visible from the outside, so that the bare wood edges will not be visible.



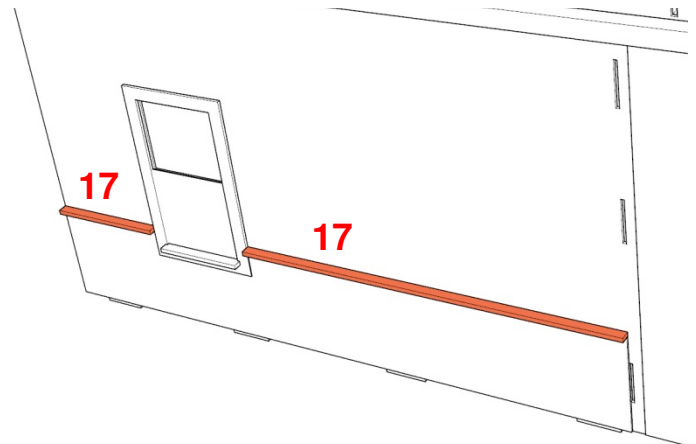
Set the glazing G1 in place against the inner window frame (no glue). Then apply a small amount of glue to the outside edges of the sash 19 and set in place over the glazing and against the inner window frame.



Set the upper glazing in place. Then apply a small amount of glue to the outside edges of the sash 20 and set in place over the glazing and against sash 19.

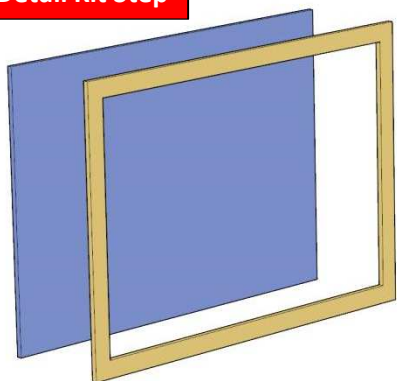


You can trim sash 18 to allow the window to be installed in the open position if desired.

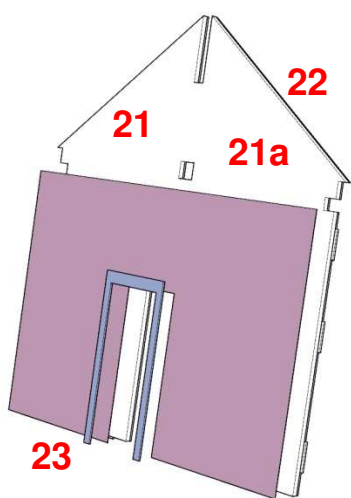
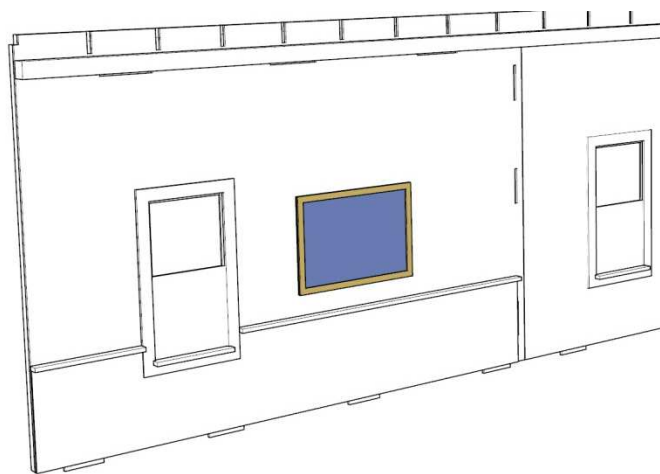


Cut and glue chair rail 17 to sit on top of the wainscoting.

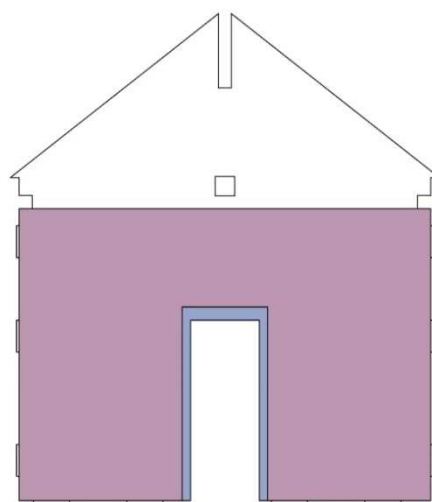
Optional Detail Kit Step



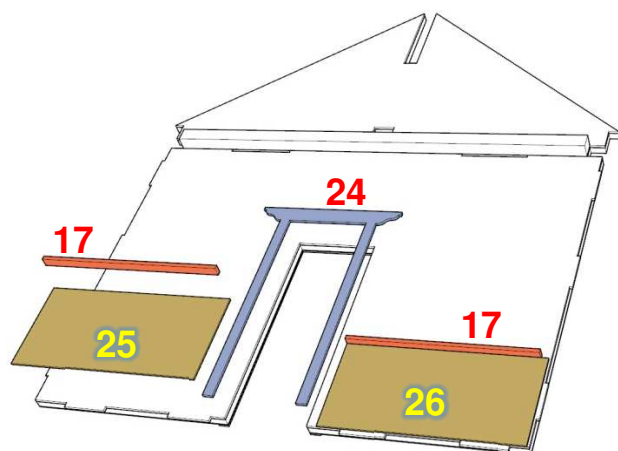
If you have the interior detail kit, glue the pipe display panel to the frame and glue to the wall assembly as shown to the right.



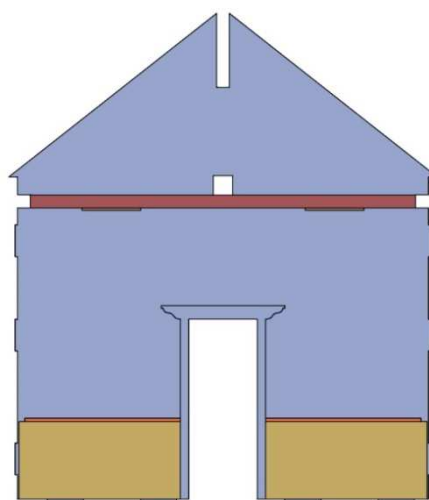
Glue panels 21 and 21a over top of 22. Glue the laser cut wallpaper to the wall panels. Glue the door frame to the opening in the wall assembly.



Note: Graphics panel is glued to the basswood panels 21 and 21a.

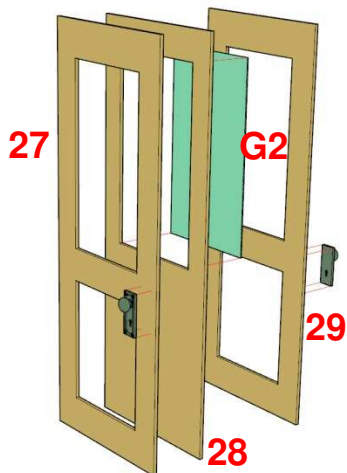
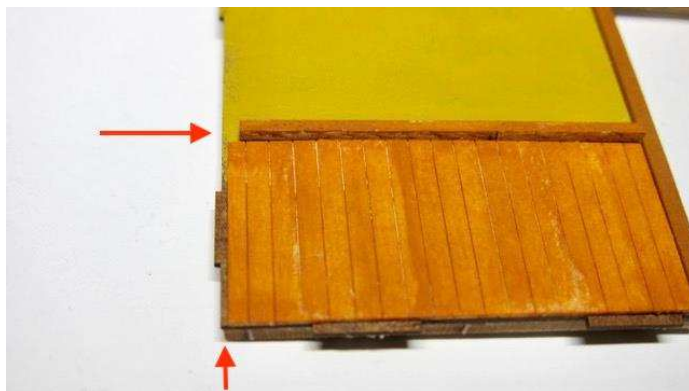


Glue wainscoting 25, 26 in place tight to the doorframe and leave a slight gap where the wainscoting from the side walls will interlock. Cut and glue chair rail 17 to sit on top of the wainscoting.

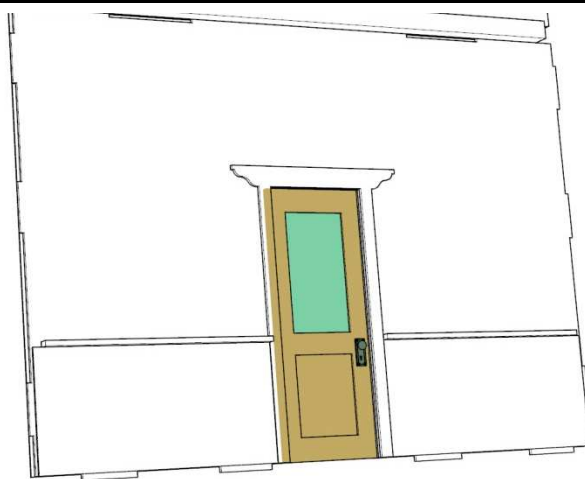


Glue 1/8" square bracing strip stock to the front face of the wall assembly, flush to the top of the slots in the wall.

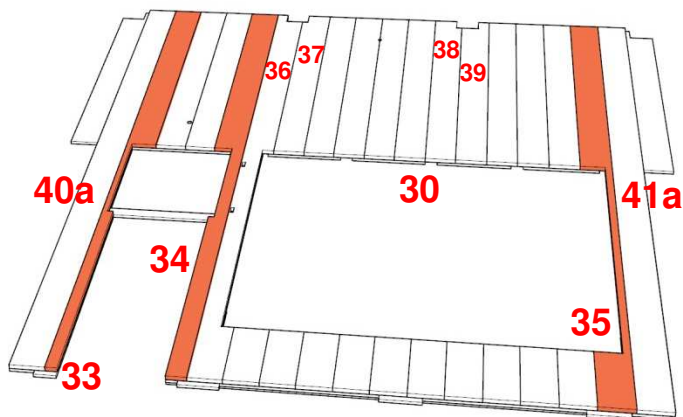
Carefully measure part 17 when cut so that it also interlocks with the chair rail on the side walls.



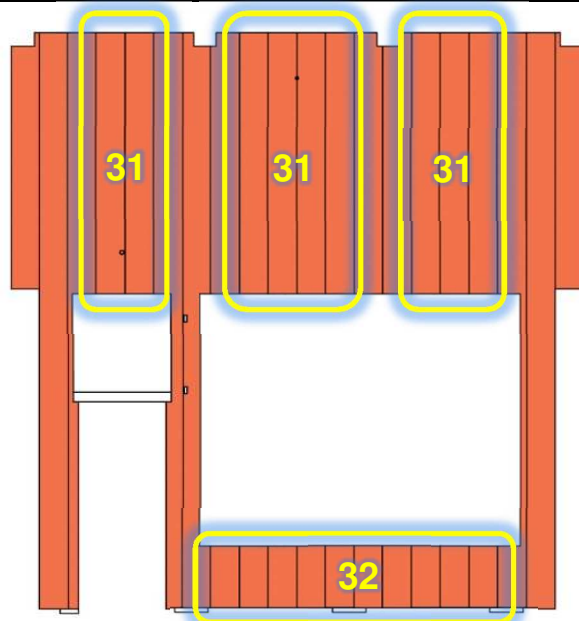
Glue door panels 27 & 28 together. Set glazing G2 in place and glue 29 over top of glazing.



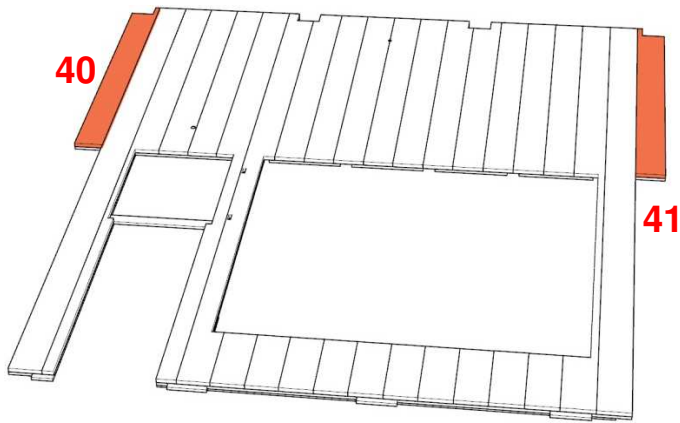
Glue the door in place. You may want to wait to glue the door knobs to the door until you are ready to assemble the structure.



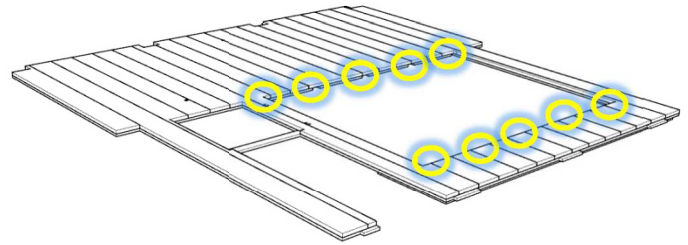
Start by gluing these three boards to panel 30 using the engraved lines on panel 30 as guide. Then glue 36, 37 and 38, 39 in place. Fill in the remaining gaps with 31 and 32. Don't get glue into the slots, tabs and lamp holes on the boards of part 30.



The front wall boards are laser cut and will fit together like a bit of a jigsaw puzzle. This was done in order to randomize the individual board grain.



Finish up the board installation with the outer two boards above.

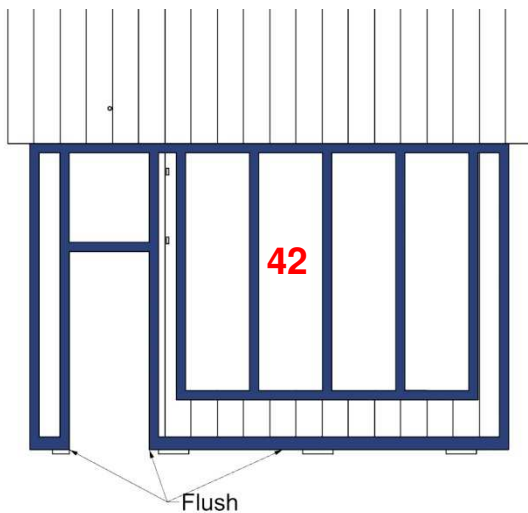


Notch the planks around the window frames to match the notches in panel 30 (10 places).

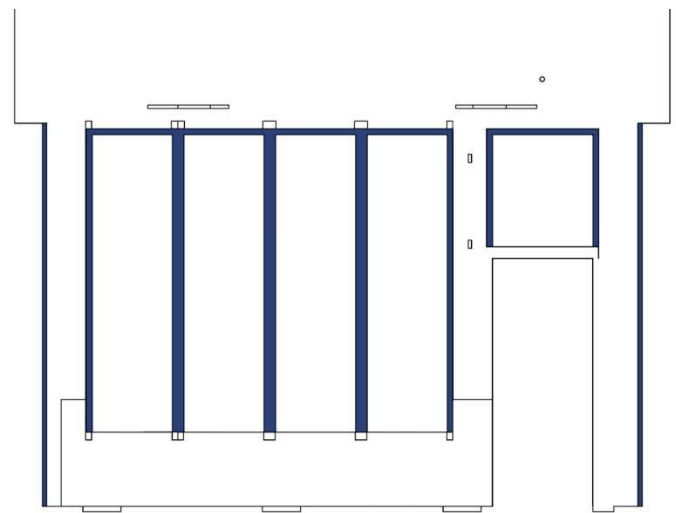
Make sure to drill holes through the wood boards that match the holes in panel 30.

Geoff's Tip

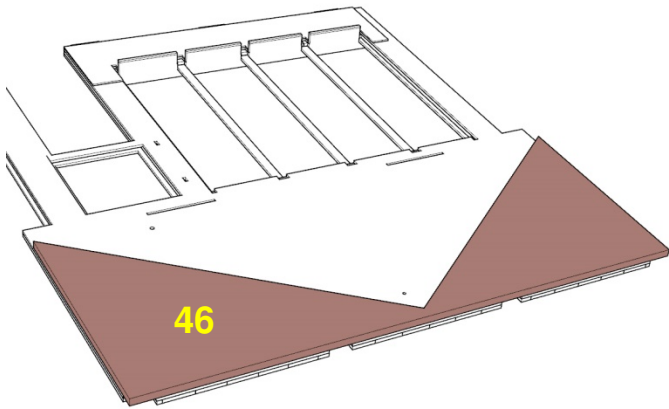
The vertical boards are individual and glued to a laser cut resin impregnated sheet. I debated whether to pre-paint them but decided against it as I did not want the boards to completely butt up against each other in the course of assembly. Instead, only after the vertical boards were mounted, did I paint them with Vallejo Game Effects #72.130 Rotten White and then while the paint was wet I immediately scored the lines between the boards with a #11 X-ACTO blade to show the individual nature of the boards.



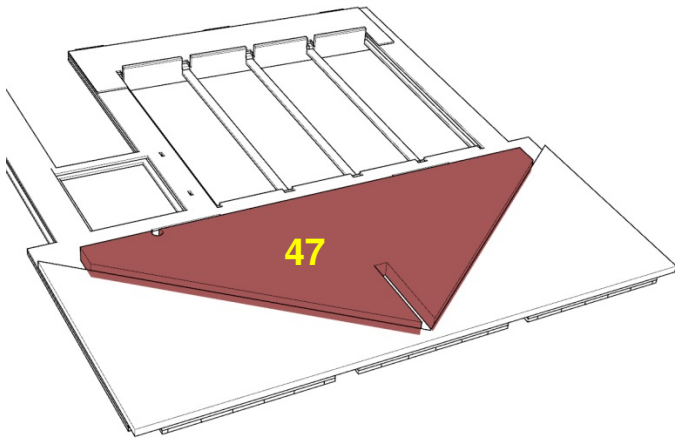
Glue the trim panel 42 to the front wall. Center trim panel on all openings so that the top corners of the trim panel are flush with the lower edge and door opening.



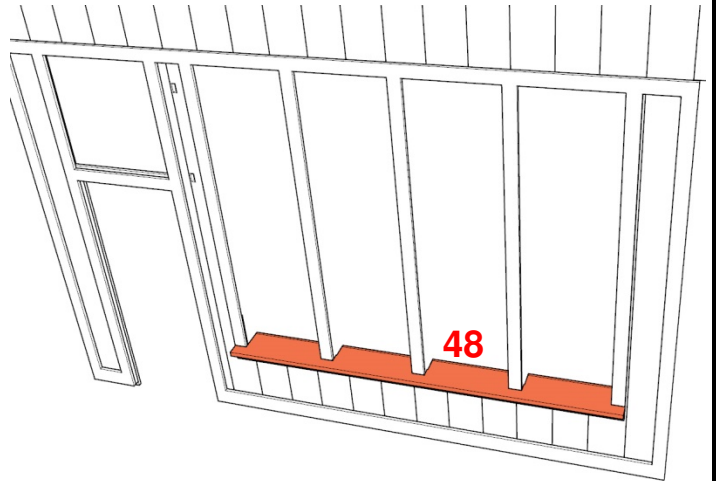
View of inside looking out.



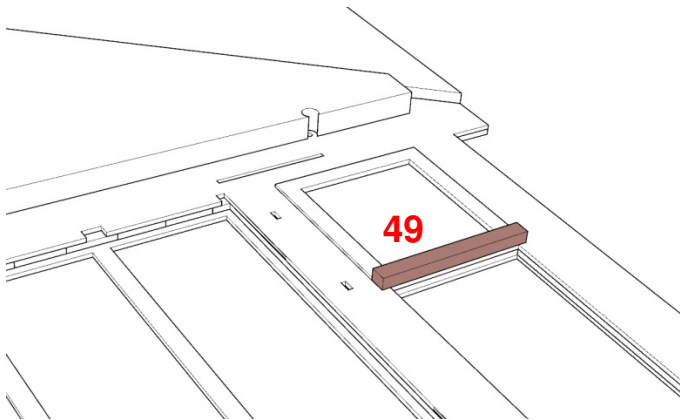
Paint the backer panel 46 and glue in place, flush with the top and sides of the front wall assembly. To avoid warping, weight or clamp the assembly during drying.



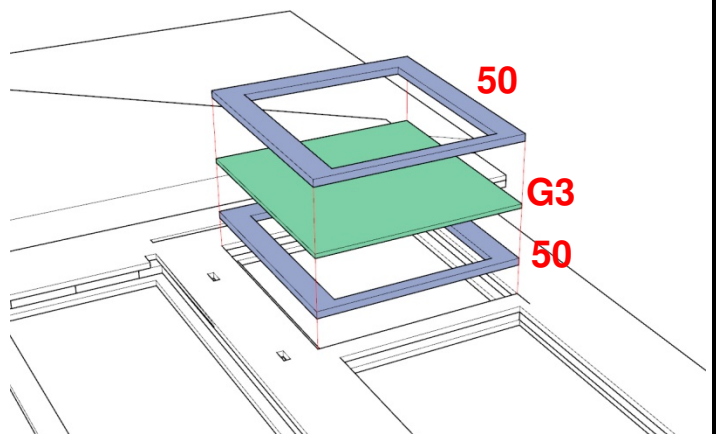
Glue 47 in place, flush in the "V" of 46. Be careful to not cover the slots in panel 30 at the bottom edge of 47.



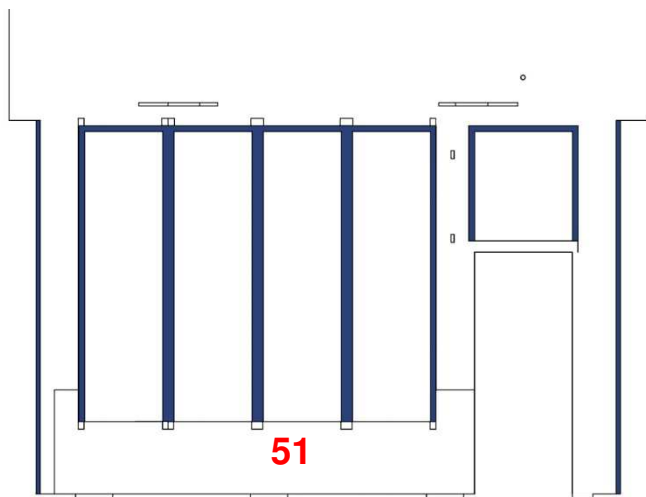
Glue the front window sill 48 in place.



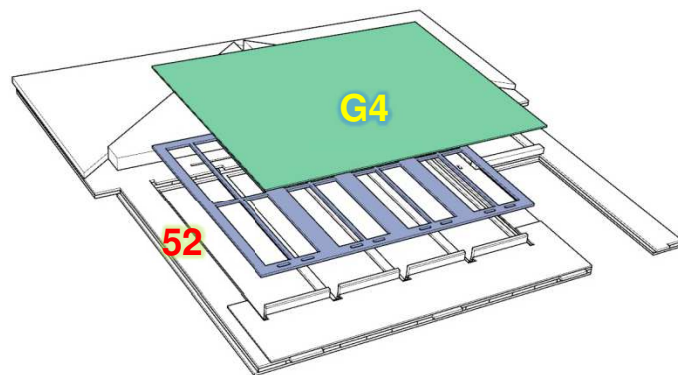
Glue transom beam 49 in place.



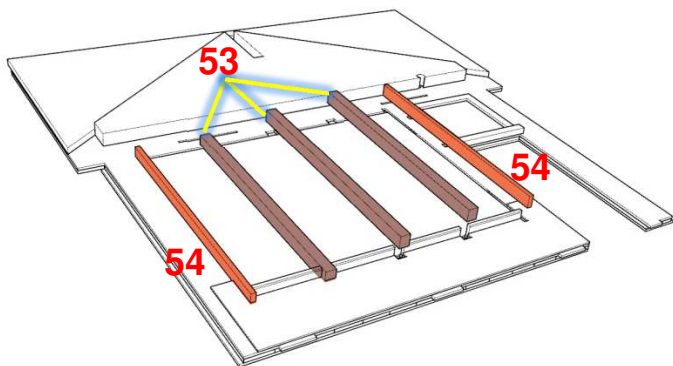
Insert the window frame 50 from the inside of the front wall assembly, then insert the glazing G3 (gluing of either part is not necessary). Then install the retaining frame 50 from the inside of the wall assembly. Glue all around the edges to retain the glazing and frames. This should make for a crystal clear installation of the window.



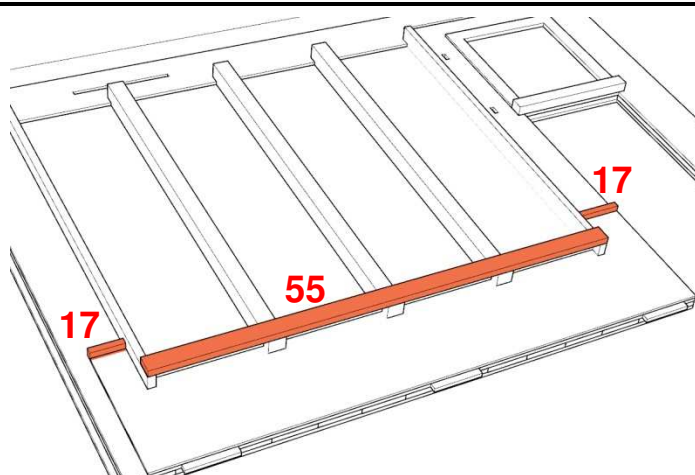
Glue the wainscoting in place on the inside face of the wall assembly.



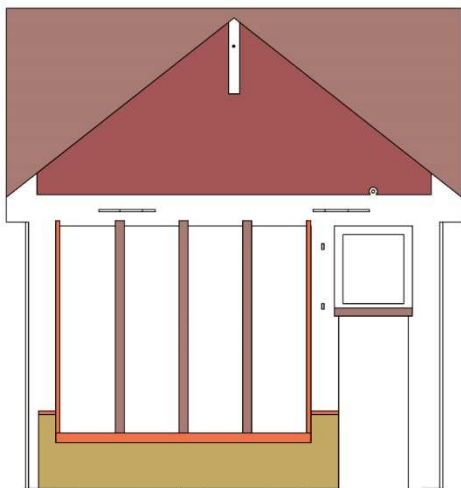
Paint the front window sash panel. Drop the sash into the window opening from the inside of the front wall assembly (no glue is necessary). Clean and drop the window glazing G4 directly onto the sash panel without glue.



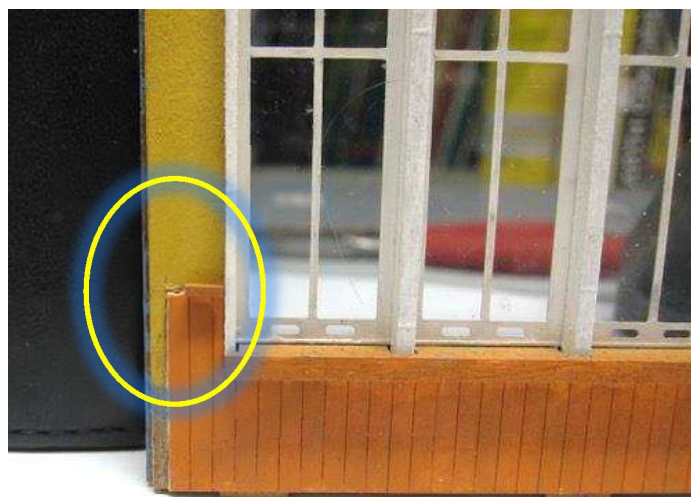
Paint and glue the window posts in place, applying a small amount of glue to the notches in the front wall assembly.



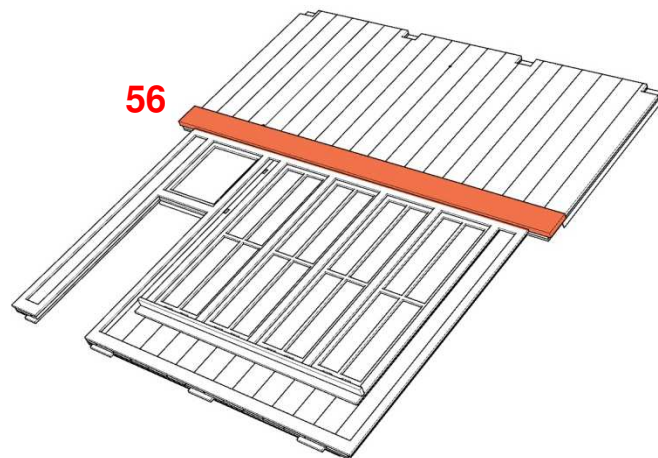
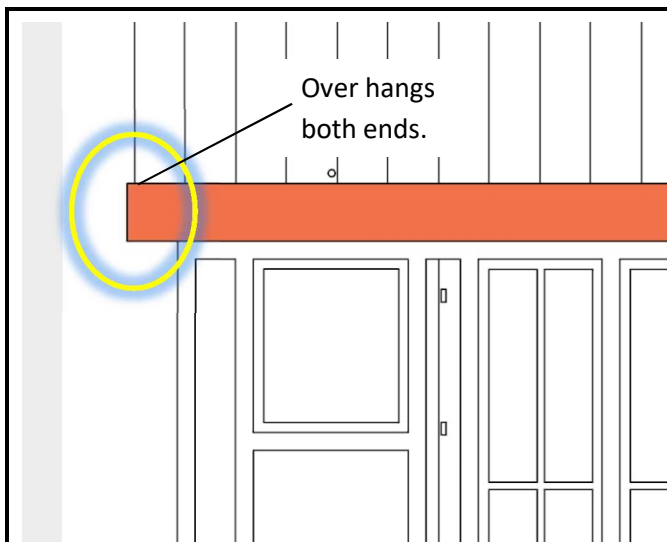
Glue chair rail and window sill trim in place.



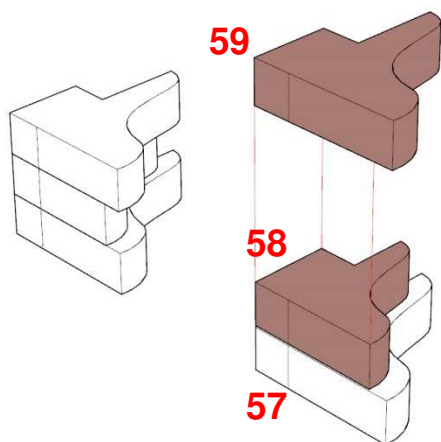
Showing alignment of inner face parts.



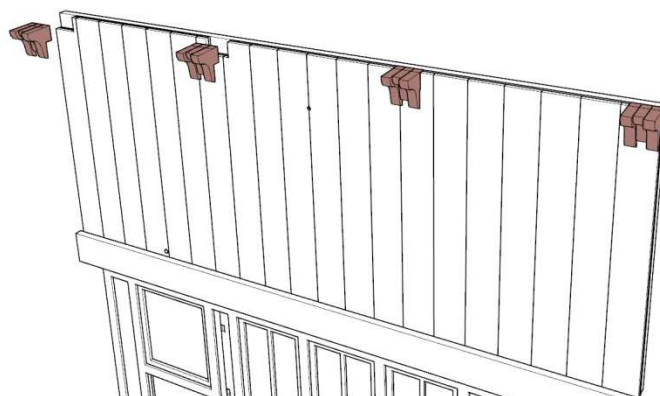
Note you may need to nip a bit of the chair rail 17 to match up with the side wall chair rail during assembly of the building.



Paint and glue the ledger beam in place, flush to the top edge of window trim panel 42 and centered left to right.



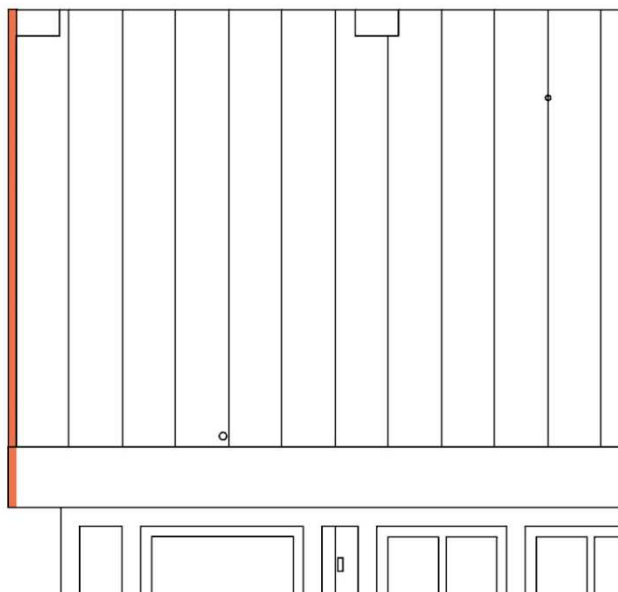
Glue the cornice bracket parts 57, 58, and 59 together. The top and back edges should be flush. Paint them in your building trim color.

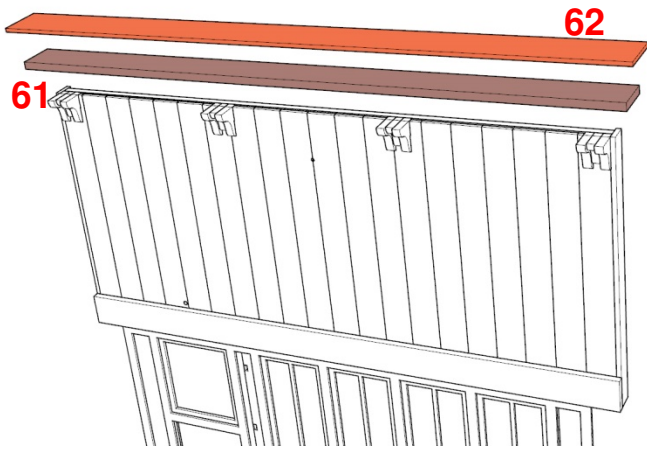


Apply some glue in the bracket slots and glue in the bracket assemblies in four places. You may need to lightly sand the faces of the cornices to fit snugly into the slots.



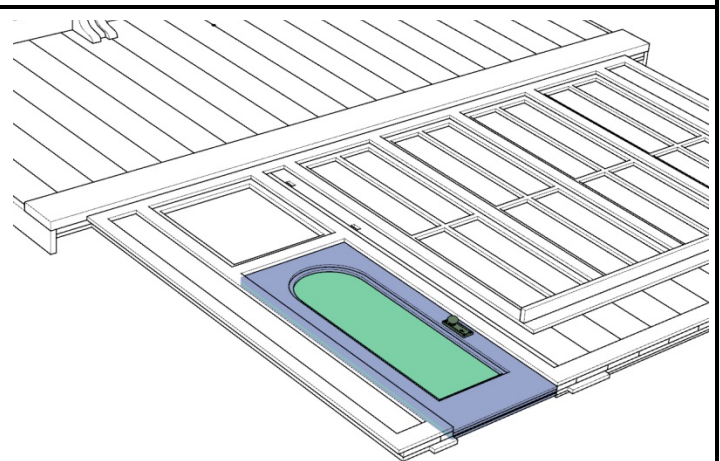
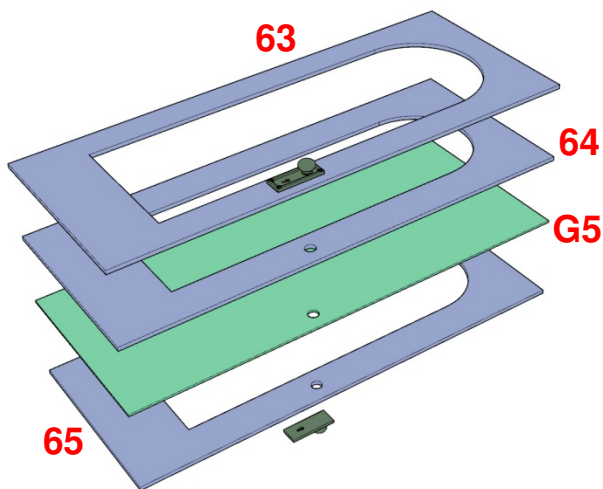
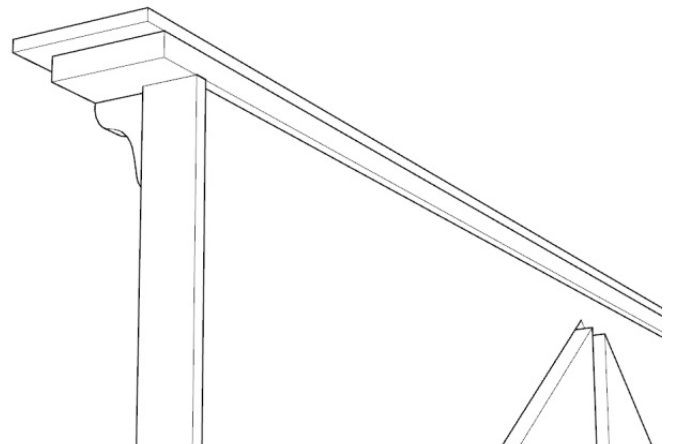
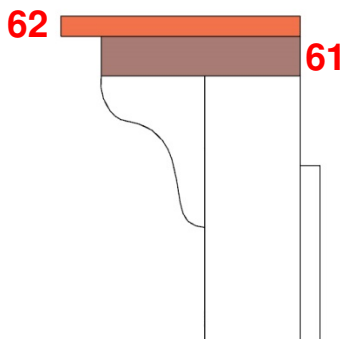
Glue the trim pieces 60 as shown on the left and right faces of the front wall assembly. Glue flush with the edge of the vertical boards on the front wall.





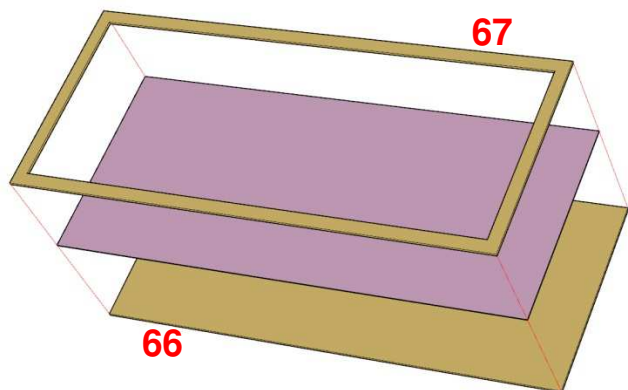
Glue the cornice cap pieces together (61 and 62). They should be centered left/right and flush to the back face. <See below>

Glue the cornice assembly to the top of the front wall assembly. It should be flush to the back edge of 60 and centered left/right. <See below>

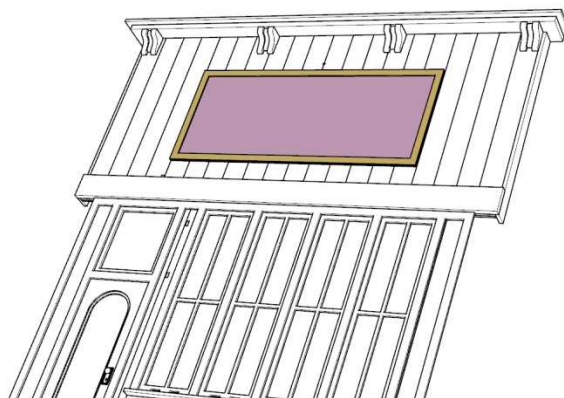


Glue the door in place in its opening.

Glue the door panel 63 over panel 64. Using a small amount of glue on the back of panel 64, glue the glazing panel G5 in place. Glue the inside door panel 65 to the glazing. Finish the door by gluing the 3D door knobs in place.



Cut out and glue the front sign graphic to panel 66. Glue the sign frame 67 over top of the graphic.



Glue the sign assembly to the front wall, centered between the lamp hole and the top of the ledger beam.



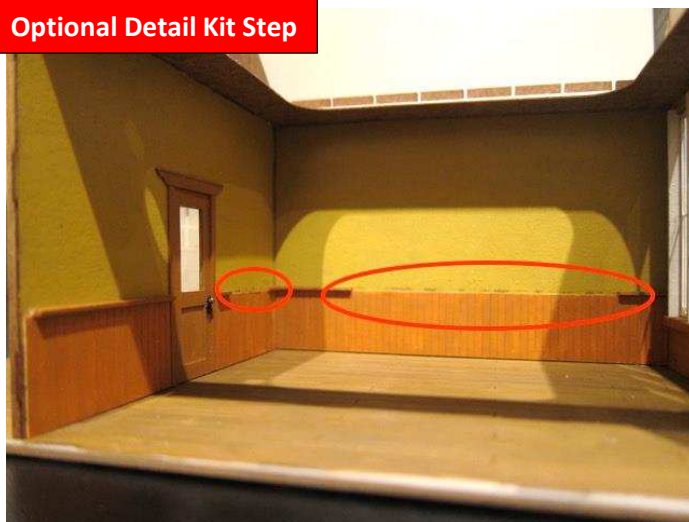
The floor/foundation is made from good quality art board. Start by spraying the deck with a good primer such as Tamiya Surface Primer (L) (Gray) #87042.



Paint the floor with a suitable wood color base. Then drybrush a second color to the floor to represent a wood floor. Varying the colors on each board will give the floor boards a more realistic finish.

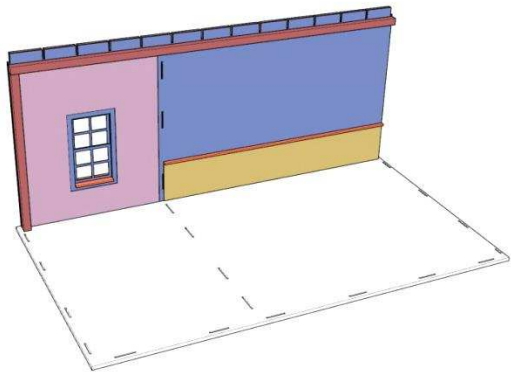


Now let's tackle the assembly of the structure and the interior components.



Optional Detail Kit Step

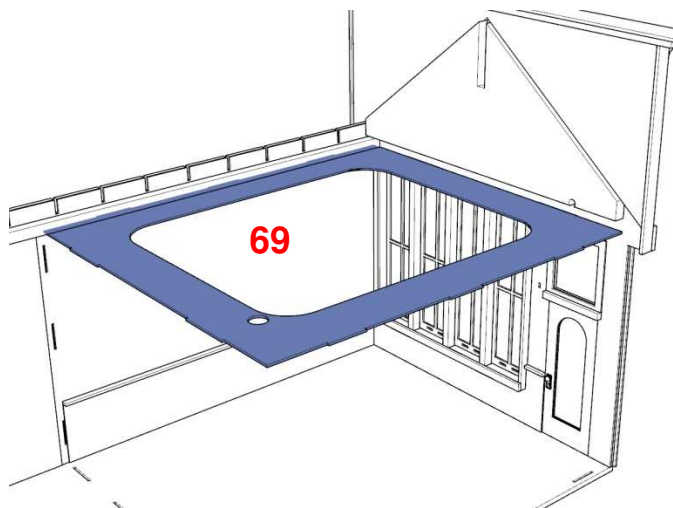
On the right wall, you can either cut out the chair rail where the interior cabinets go or glue the cabinets up tight to the chair rail.



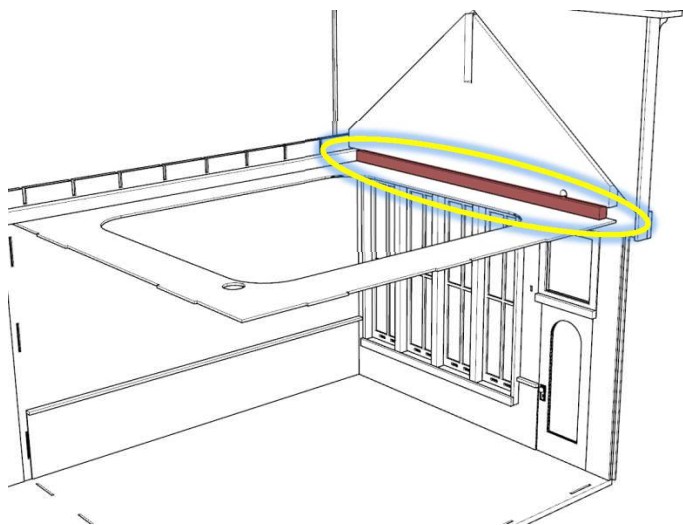
Glue the right wall assembly into the slots in the foundation panel.



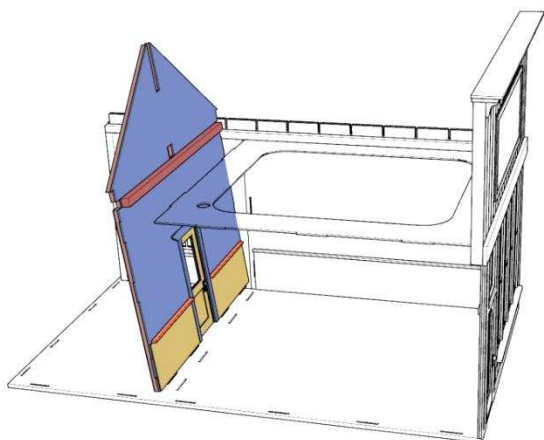
Glue the front wall assembly into the slots in the foundation and flush with the right hand wall assembly.



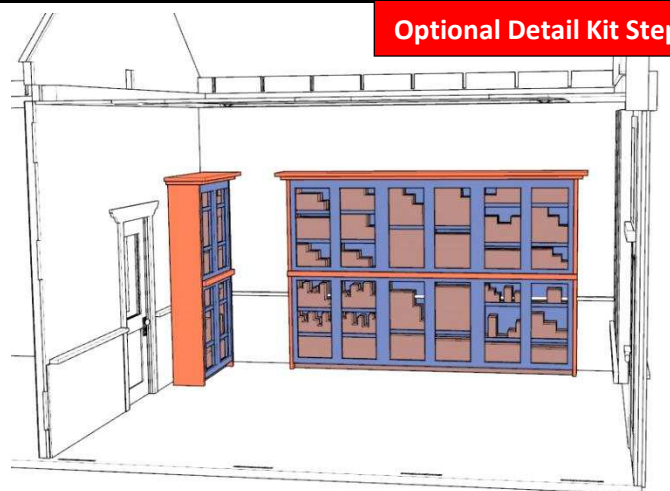
Glue the ceiling panel to the right wall assembly and to the front wall assembly. ***Make sure the panel is fully engaged into the slots in the wall panels.***



For extra strength, you can glue a length of 1/8" bracing to the front wall and ceiling panel as shown.

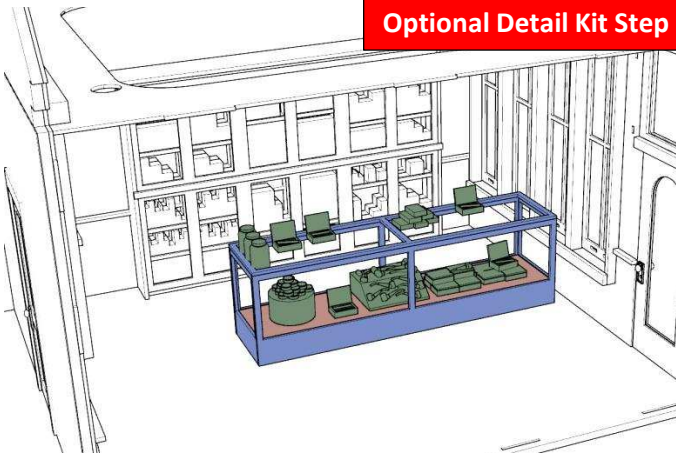


Glue the interior wall assembly into the tabs in the floor wall and ceiling panel. If you have too many problems aligning all the slots, you can remove the tabs that go into the right wall panel. Again, ensure all the tabs are fully engaged so everything is tight and square.



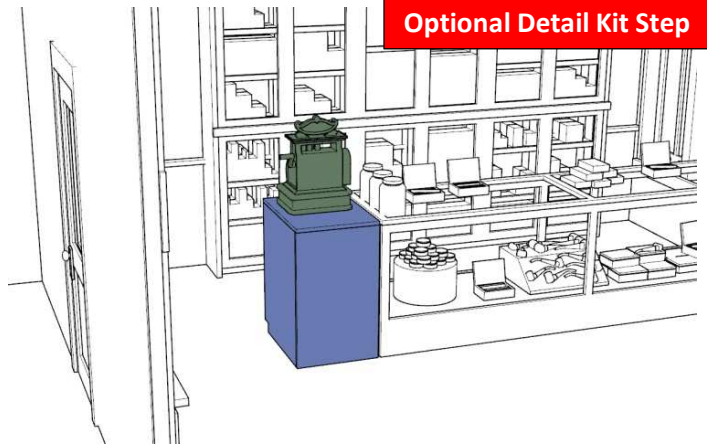
Glue the interior detail kit components in place. Glue the large cabinet to the right wall and the smaller cabinet to the interior wall.

Optional Detail Kit Step



Glue the glass display cabinet in place.

Optional Detail Kit Step



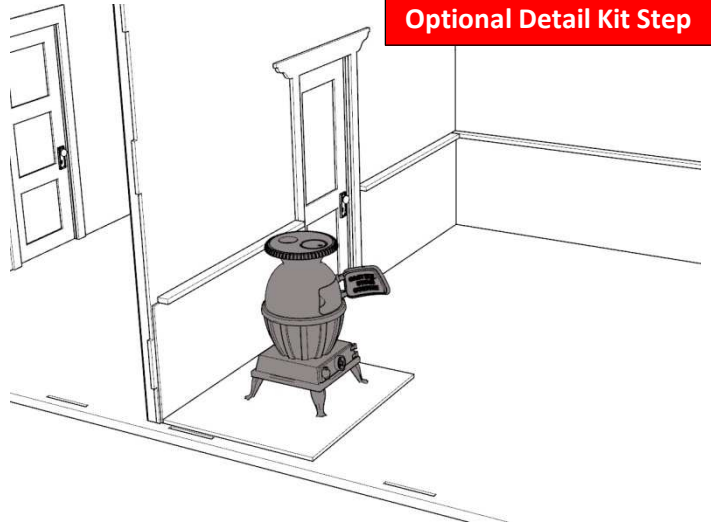
Glue the cash register cabinet in place next to the display cabinet.

Optional Detail Kit Step



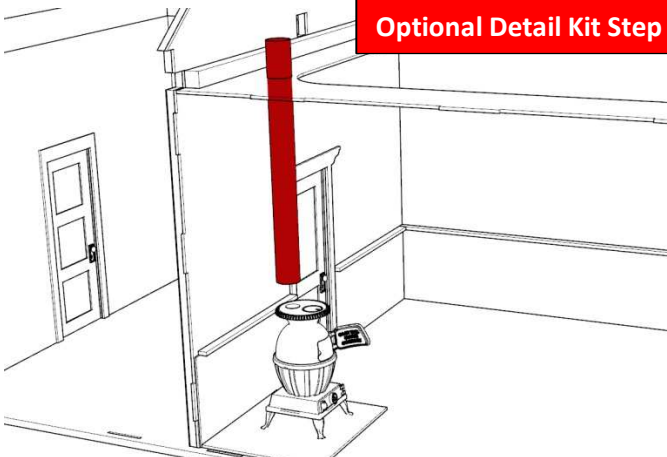
Paint and glue the stone work floor panel D55 flush to the interior wall and just inside of the slots for the left wall (leave space for the wainscoting panel inside of the slot). Note the marks on the panel for the stove location.

Optional Detail Kit Step



Note the marks on the stone panel for the stove location. Glue the stove in place.

Optional Detail Kit Step

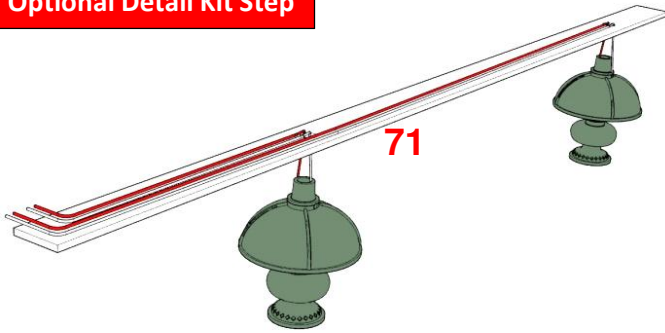


Optional Detail Kit Step

Cut the aluminum tubing chimney to a length that will allow it to sit on the stove top and protrude through the hole in the ceiling panel and paint it flat black.

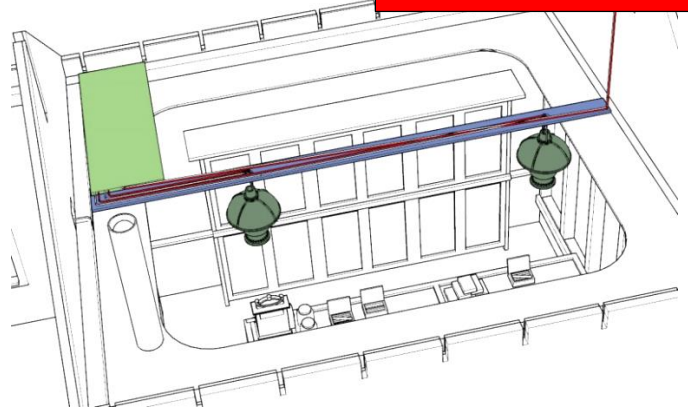
Slide the chimney through the hole in 69 down to the top of the stove. If you have the optional lighting kit, route the LEDs down the tube and into the stove prior to gluing the chimney in place.

Optional Detail Kit Step

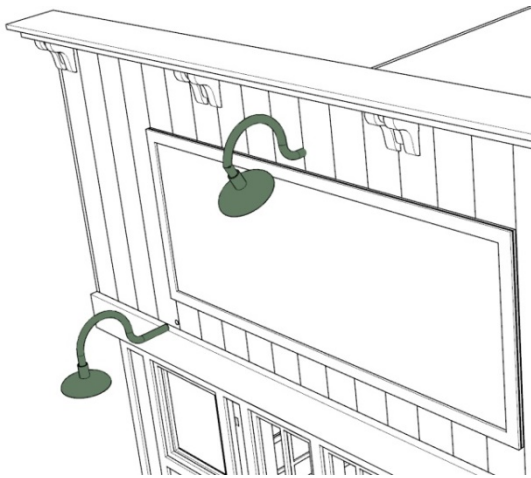


Wire the lanterns in accordance with the lighting kit instructions. Route the wiring through the holes in panel 71. Glue the wiring flat to the top of the panel.

Optional Detail Kit Step



Glue the lighting board in a convenient place above the ceiling panel and not blocking the rafter slots. You will need to access it for soldering the LEDs in later steps. Glue 71 in place to the top of the ceiling panel.



Bend the phosphor bronze wire to match the gooseneck lamp template. Glue on the lamp shade. Glue the lamps into the holes above the door or the sign.

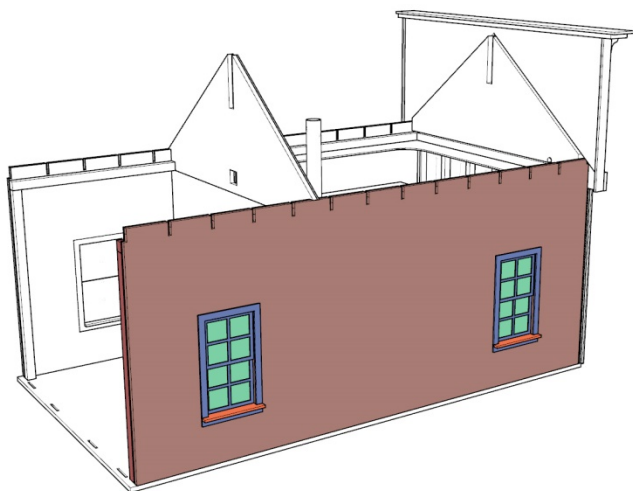
Optional Detail Kit Step

FRONT LAMPS

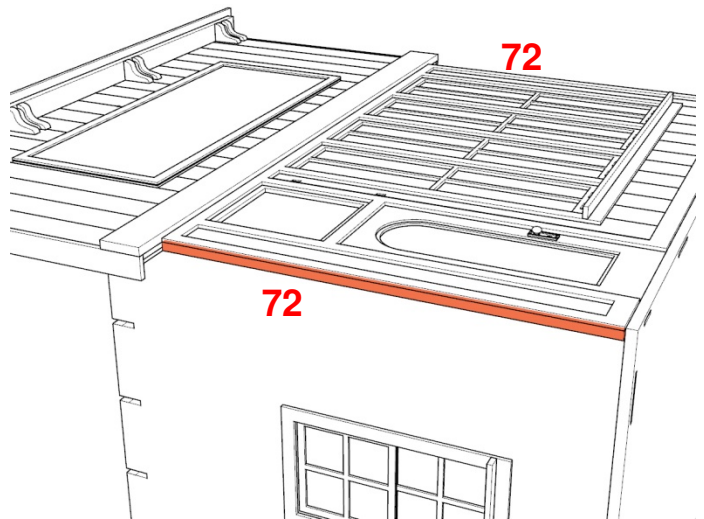
If you have the lighting kit, pick either a lamp location above the door or the sign and route the front lamp wiring through the front wall to the lighting board.

You can use both locations if desired, but you will not be able to use a light in the back room.

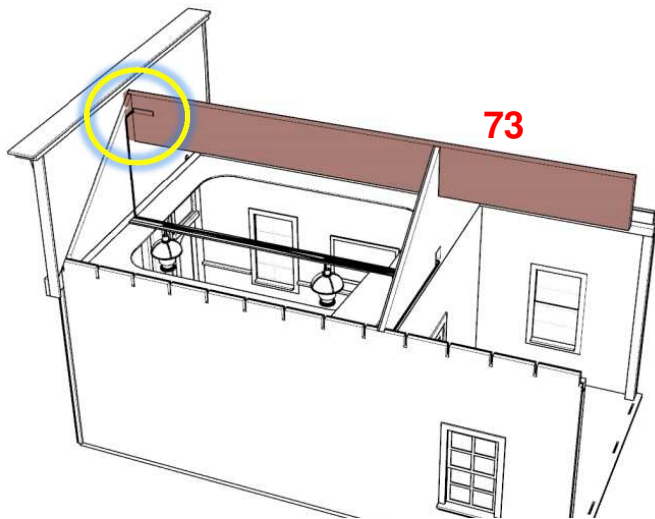
Refer to the wiring diagram that comes with the lighting kit for further instructions.



Glue the left wall assembly in place, making sure to fully engage the tabs into the slots in the foundation and the interior wall assembly.



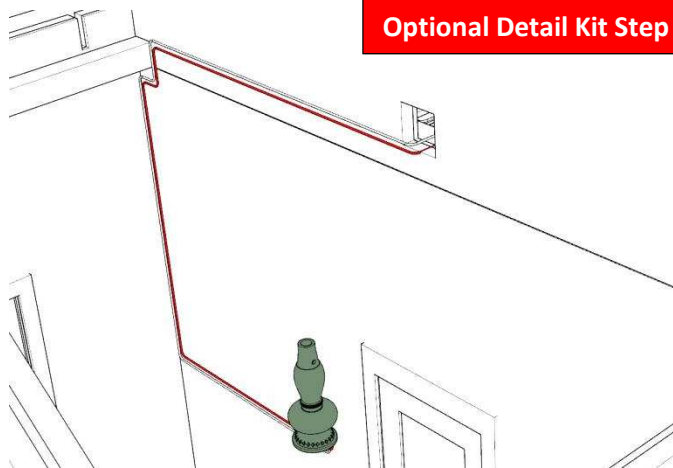
Glue trim strips 72 to the side walls, flush with the front edge of the front wall trim panel.



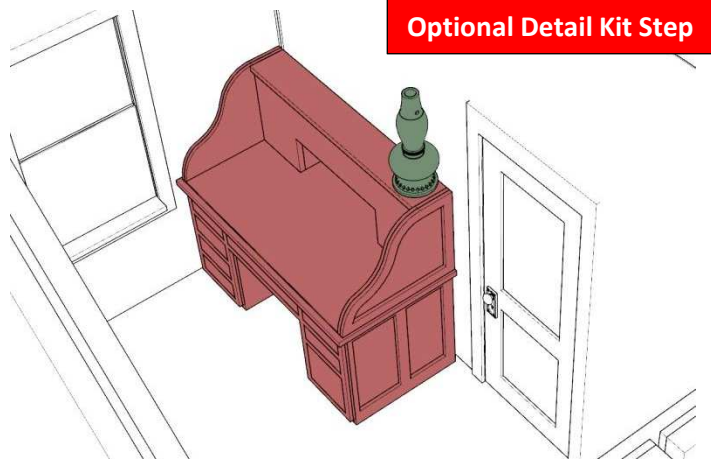
Glue the ridge beam 73 in place, making sure the clearance slot is facing the front wall.



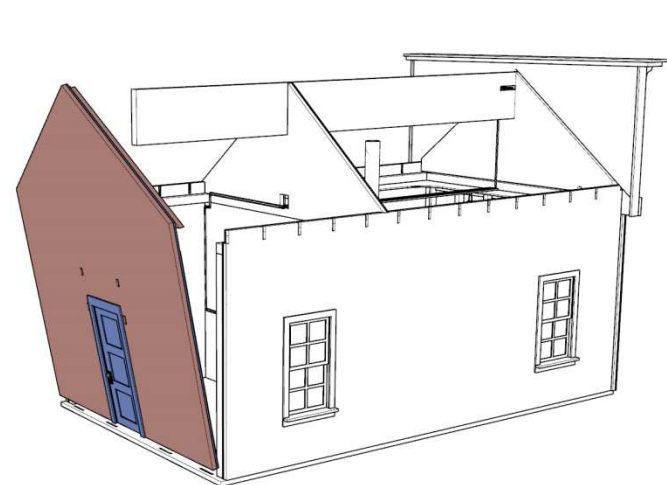
Now you are ready to install the interior components to the back room.



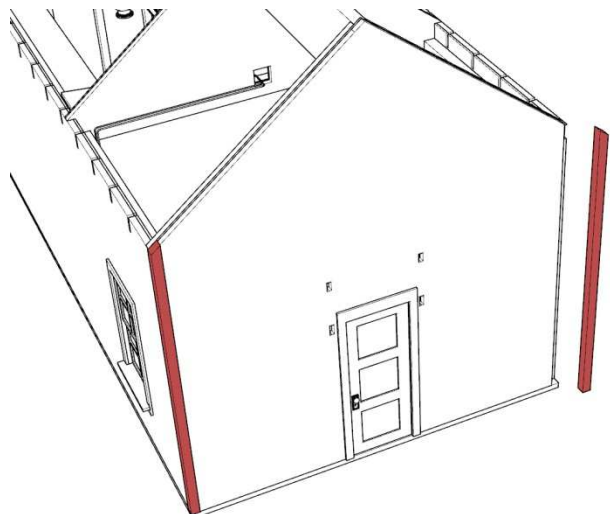
If lighting the back room with a lantern from the lighting kit, route the wiring as shown to the lighting board...



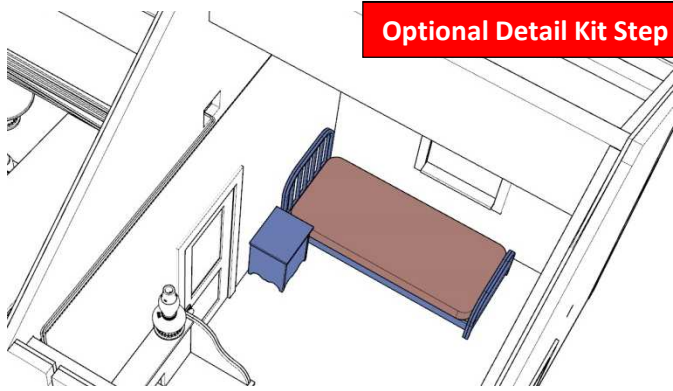
...so that the lantern will sit on either the desk or the bedside table as shown in the detail kit instructions.



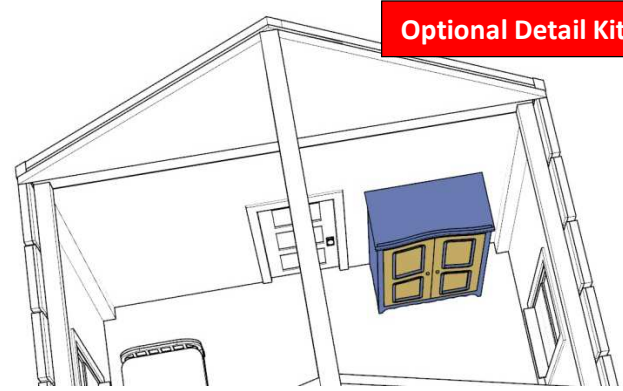
Glue the back wall into the slots in the foundation and to the 1/8" bracing on the left and right walls.



Cut, paint and glue a 3/32" square stock corner trim in place between the back wall and the sides walls.



Glue the nightstand and bed in place.



Glue the armoire in place.

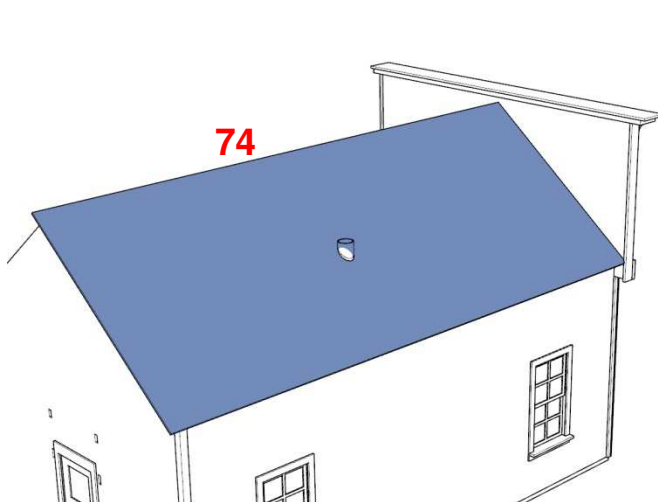
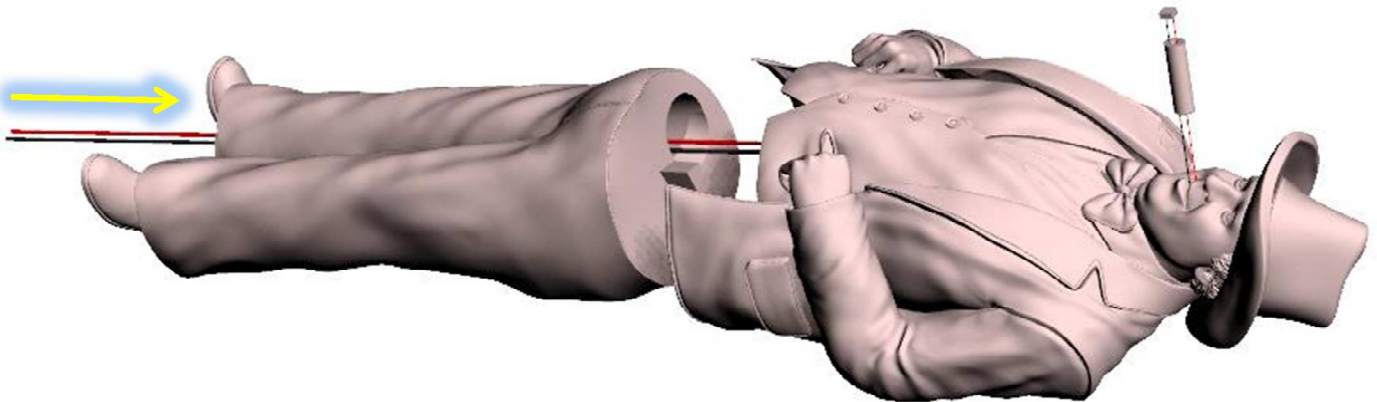
Optional Detail Kit Step

CIGAR Patron details:

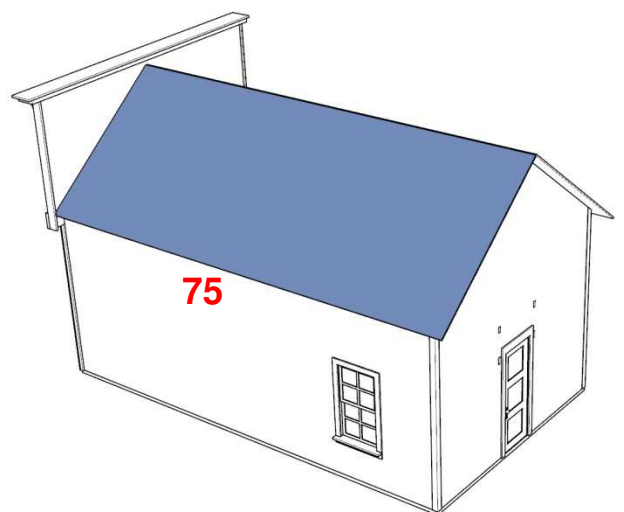
If you have the lighting kit, consider where you want to place the Cigar Patron figure before closing up the roof.

Geoff's Tip:

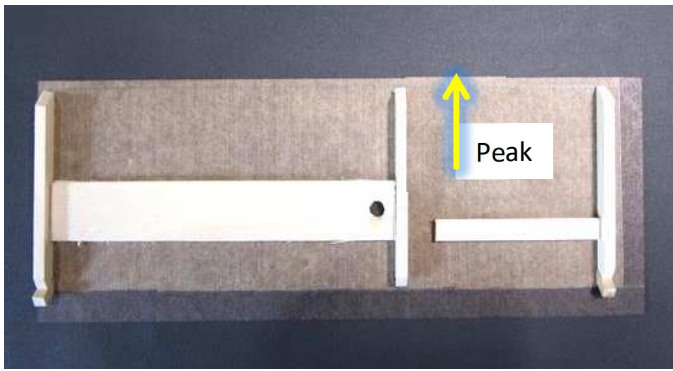
The 3D patron will be puffing on a lit cigar with an orange LED. To do this the two tiny wires need to be threaded with a 90° turn through the mouth and down the body. The modeler must be patient to get the first of the two wires inserted. Now, here's the trick. You take the second wire and adhere it to the first with a tiny bit of CA and then pull the first further through with the second one attached. Only then, do you pull the wires down to the point where the LED is in position to glue on the cigar wrapper.



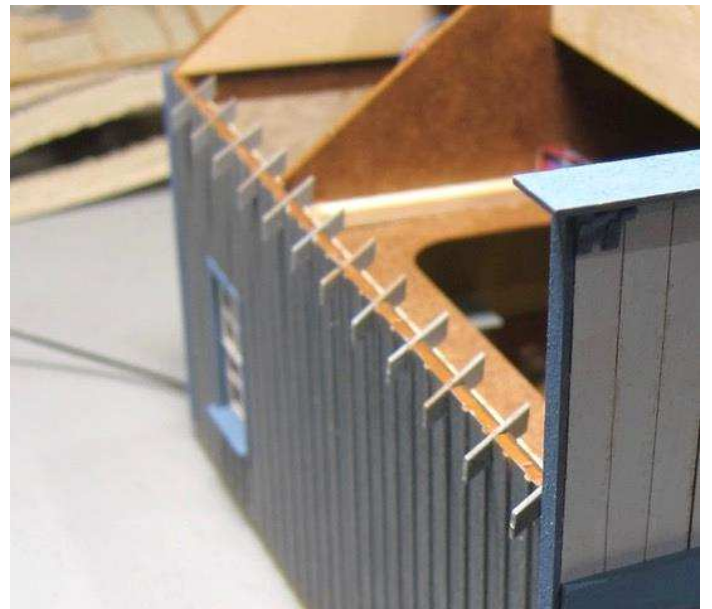
Glue the roof panel in place.



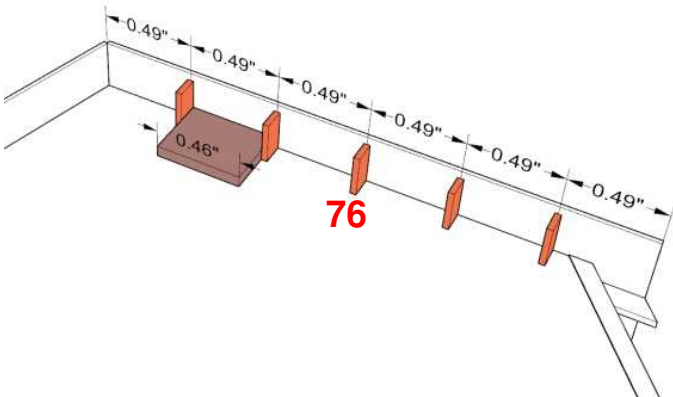
Glue the roof panel in place.



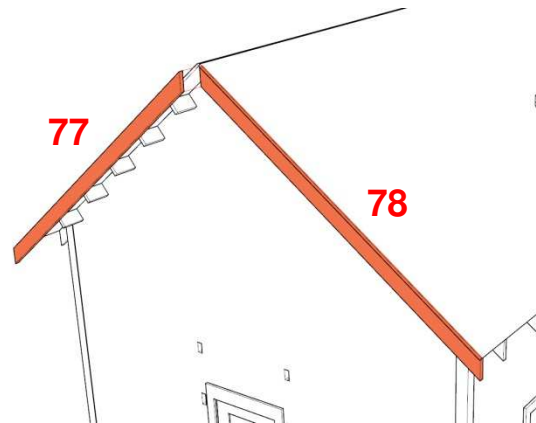
Geoff's Tip: I decided that half the roof should be permanent and half should be removable. The removable section has been reinforced so as to be more resistant to handling.



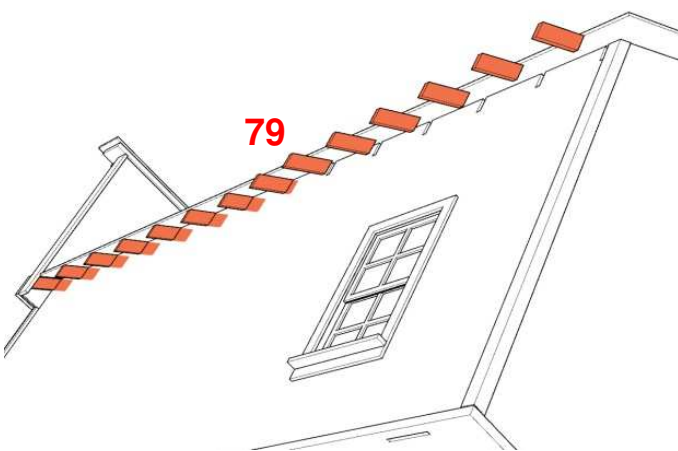
Rafters glued in place for removable roof section.



Glue the end rafter tails to the roof and back wall using the spacer jig supplied.



Glue the end rafter to the ends of the supports and lower edge of the roof panels.



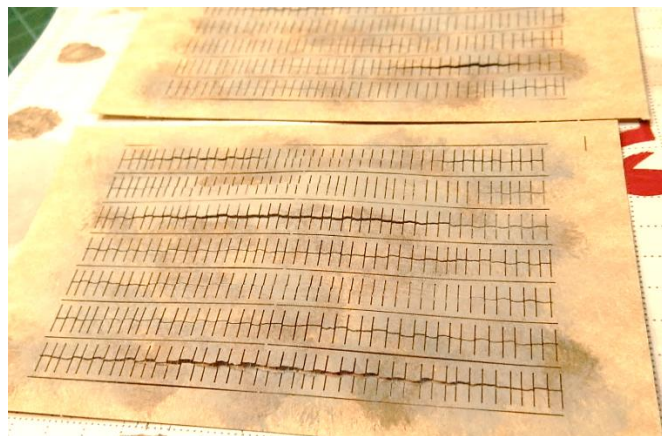
Glue the rafter tails into the slots in the side walls and to the bottom of the roof panels.



The rafter tails should be flush with the edge of the roof panel.



Note the dominantly “grey” color of the shingles.



Color and weather the shingles with various browns, greys and green grey. Stippling with a sponge and dry brushing the shingles in a random way. Chalk pastels work for this as well.



Keep things random to avoid patterns in your roof.



Generic photo

Overhang the shingles so that the end of the cut between each shingle is covered by the next row.



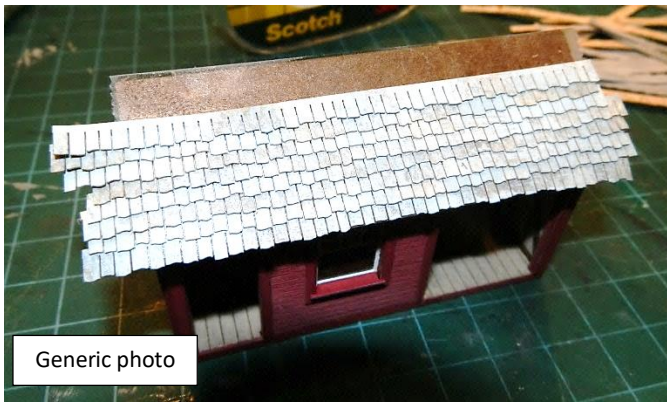
Generic photo

Cut the shingle strips and mix them up as there are doubles in the strips provided. This also helps mix up the coloration that you did in the previous step.



Generic photo

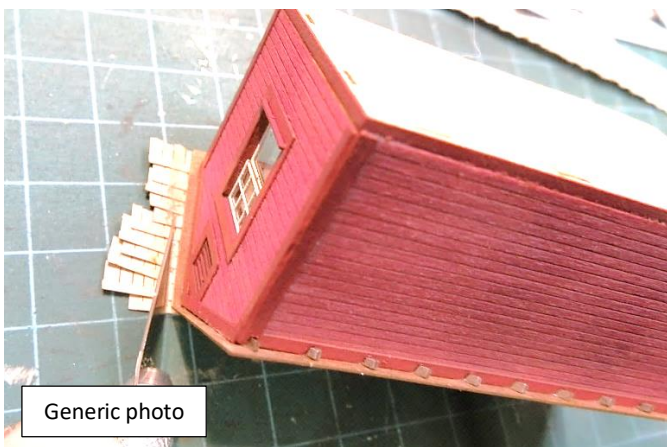
You can either glue the shingle strips down or use double sided adhesive/transfer tape to adhere the shingles to the roof as I did here.



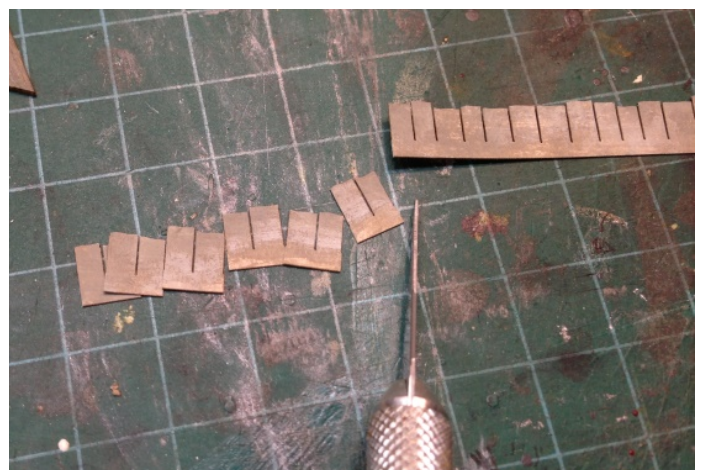
Start at the bottom of the roof with a slight overhang and work your way up the roof, lining up the top of the shingle with the marks on the roof panel. This should give you about a 40-50% overlap.



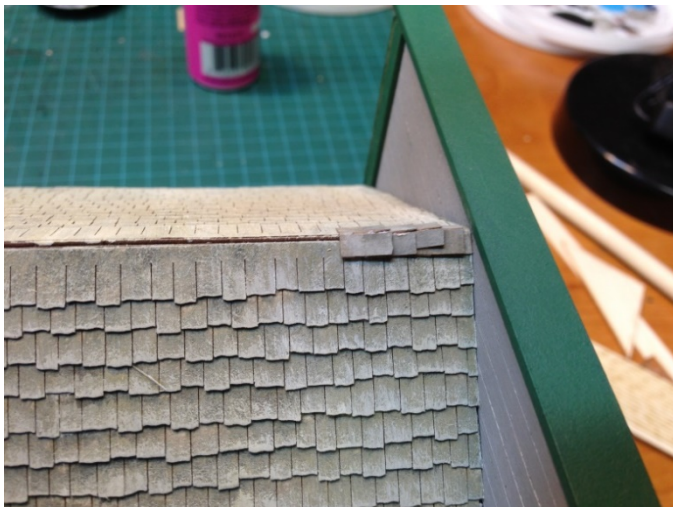
When you get closer to the top, you might have to adjust your overlap slightly to get the top row to meet the peak.



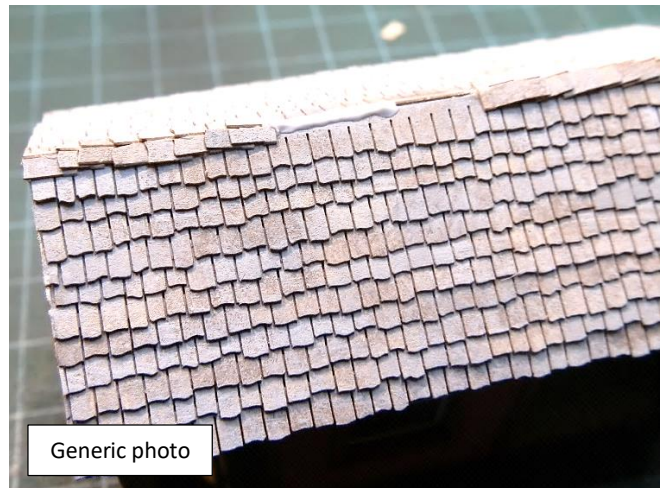
Trim off the excess on the ends with a fresh blade.



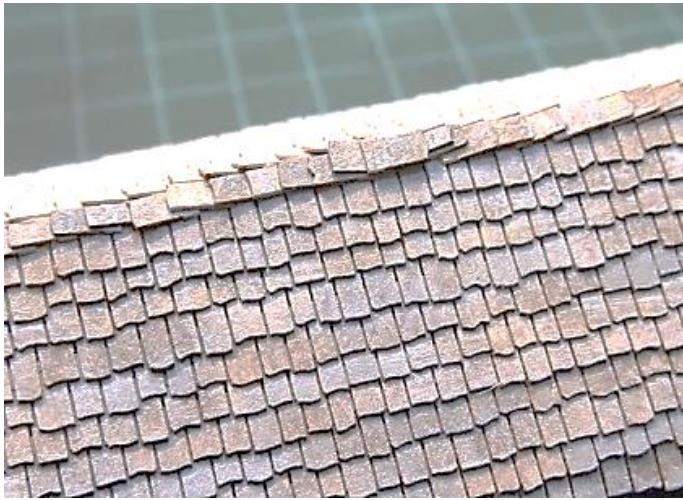
For the ridge cap, cut the shingles into pairs and fold them as shown.



Starting at each end, work your way towards the center of the roof.



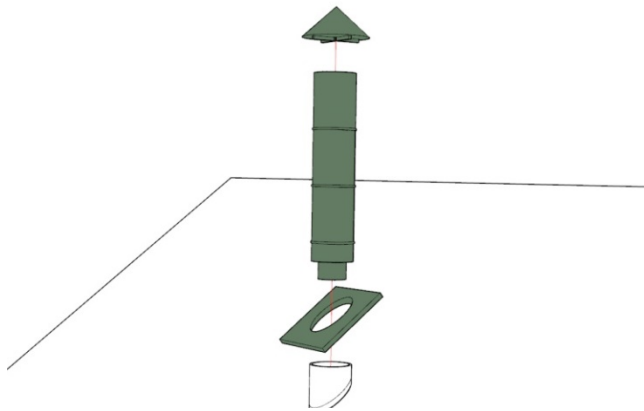
Applying a strip of white glue helps speed the process.



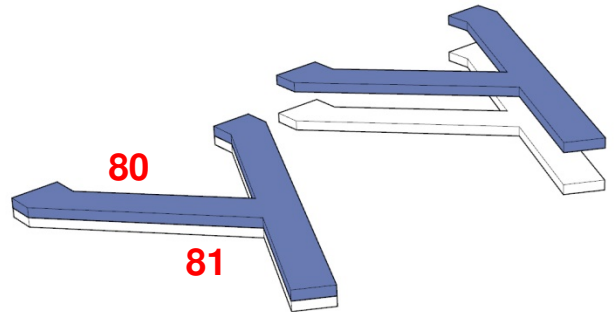
Finish the center with an overlap of two individual shingles.



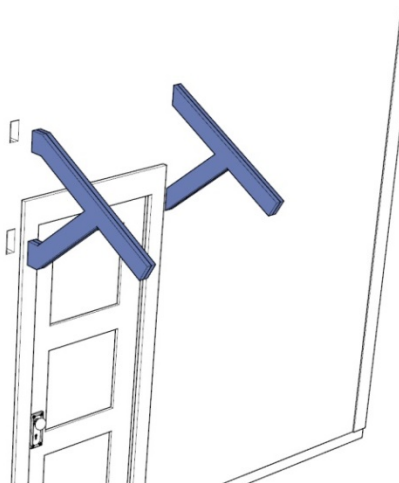
Shingle around the chimney hole and remove any shingles that will interfere with the chimney plate in the next step.



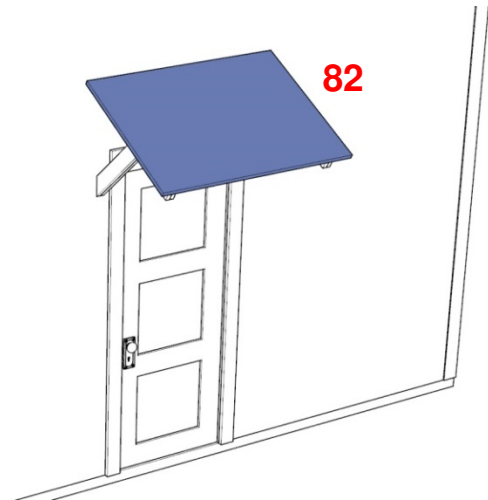
Glue the chimney cap to the chimney and then through the chimney plate, into the hole in the roof. You will need to file the opening in the chimney plate to fit the chimney at an angle so the chimney stays vertical and the chimney plate fits flush to the roof.



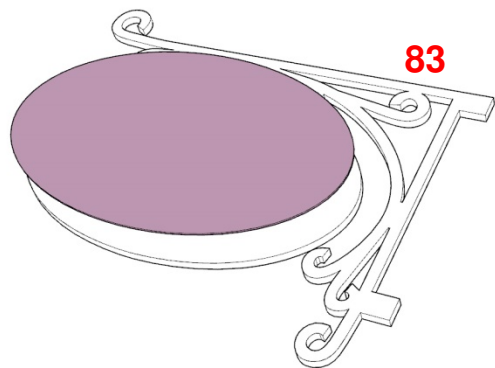
Glue the two porch support halves together.



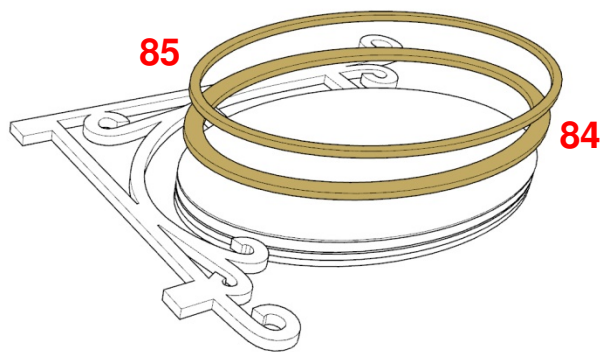
Glue the porch supports into the slots in the back wall.



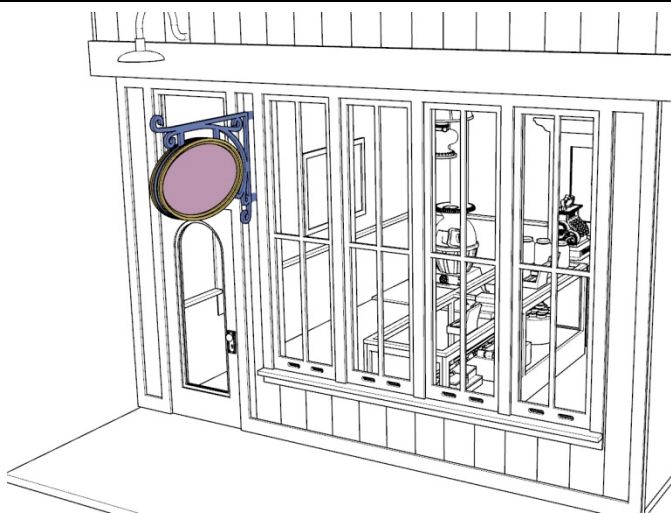
Shingle, and then glue the porch roof to the porch supports.



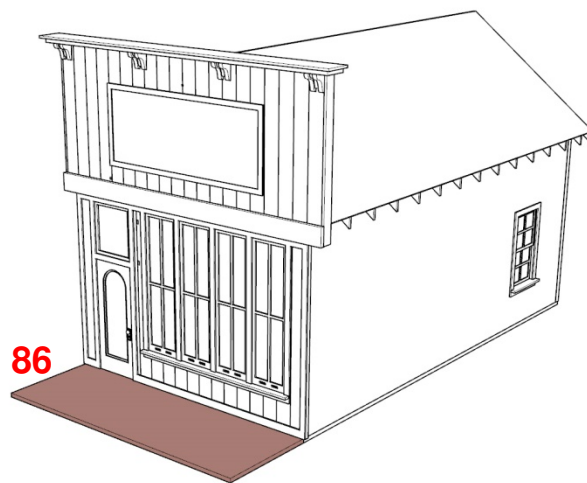
Cut out and glue the sign graphics to both sides of the hanging sign.



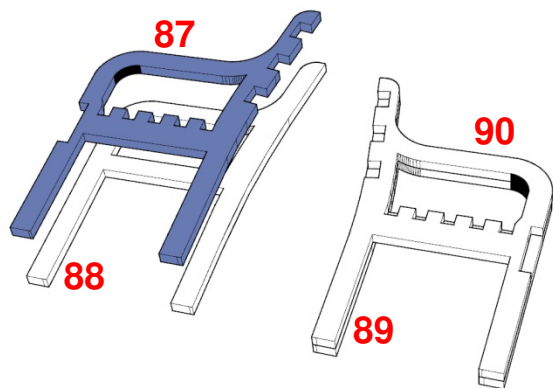
Glue the sign frame 84 to the graphic panel on both sides of the panel. Glue sign frame 85 to 84.



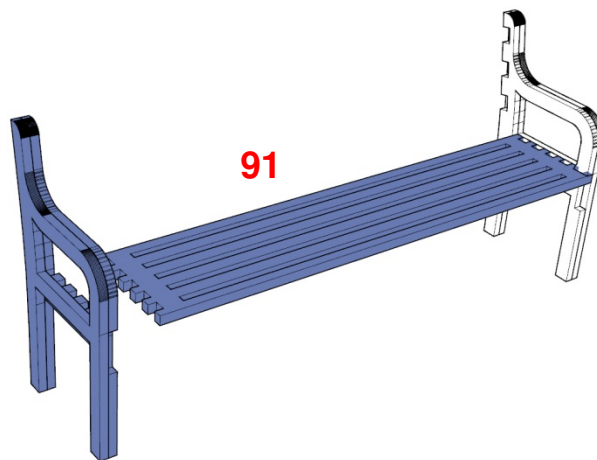
Glue the hanging sign into the slots in the front wall.



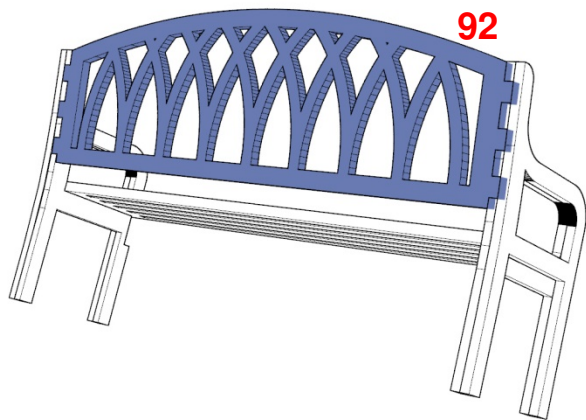
Glue the boardwalk in place.



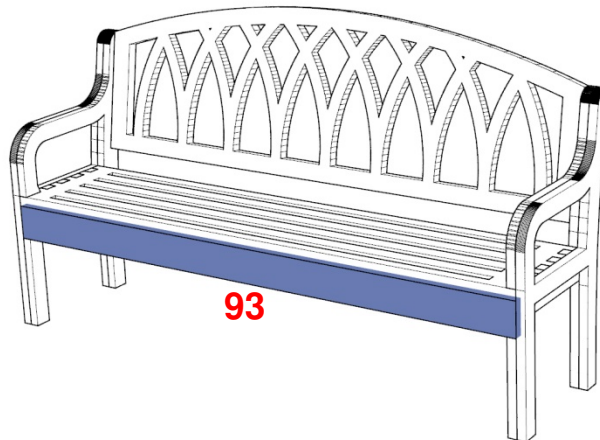
Glue bench sides 87 to 88 and 89 to 90.



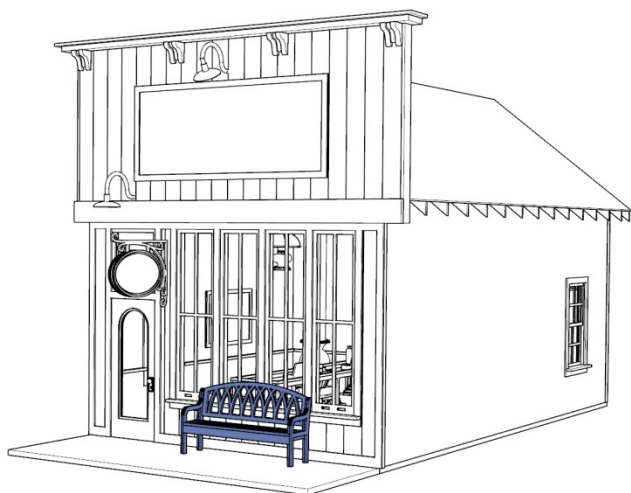
Glue bench seat 91 into the slots in the sides. Note the front of the seat should sit flush with the front of the sides.



Glue the bench back to the two bench sides.



Glue the front beam in place into the slots in the sides and seat.



Put your bench out front to enjoy a lovely cigar!

Thank you for building this classy, not so little kit. We hope you enjoyed it as much as we enjoyed developing and bringing it to you. See you next time and "Keep on Model'n!"